



6 Watson Drive Mount Pleasant VIC

3 2 2

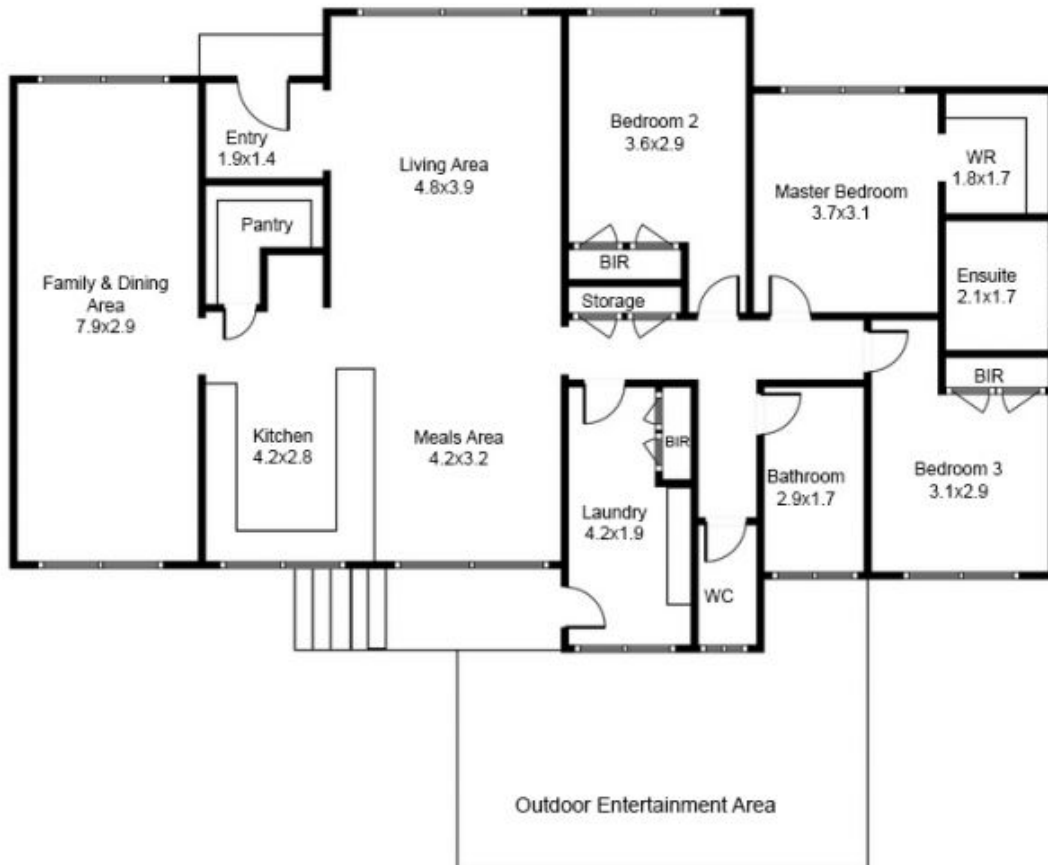
This brick veneer 3 bedroom home sits in an ideal location with easy access to the Federation University campuses and a two minute walk to Mount Pleasant Primary School, plus both Mount Helen and Ballarat CBD amenities. The master bedroom features walk-in robe and ensuite. The remaining bedrooms have built-in robes. The home has a great size kitchen with huge walk-in pantry, plus dining area and generous living room with wood fire. Plus large second living room currently being utilized as home office and gym. Further features include solar power, gas central heating, evaporative cooling and dishwasher. From the rear deck you can enjoy the evening views of the city and overlook the large rear yard, the home sits on 757m2 (approx.) allotment with room for the kids to play and side access to the rear garage. Book your inspection today.

Price : \$ 545,000
Land Size : 757 sqm
View : <https://www.ballaratrealestate.com.au/sale/vic/ballarat-western-district/mount-pleasant/residential/house/6782559>



John Nihill
03 53312233
0428284978

6 Watson Drv Mt Pleasant



Contact: John Nihill 0428284978