

2 Park Lane Mount Helen VIC

4 2 2

Situated in the highly sought-after lifestyle and leafy green suburb of Mt Helen, close to Federation University and Midvale shopping strip is this stunningly renovated four bedroom family home. The master bedroom boasts a large WIR and a stunningly updated luxe ensuite with double shower while the remaining rooms are all spacious and offer BIR's. The home features two light filled living spaces with the front sunken living area featuring a combustion wood fire. The main living space is a masterpiece of modern, contemporary living with high soaring ceilings, modern quality appliances, generous island bench, handy built in workstation and a brilliant butler's pantry with loads of storage. Outside is just as impressive with a massive decked undercover alfresco area, BBQ space and a double lock up garage at the front. Set on a massive 840m² (approx.) corner all ...

Price : \$ 650,000

Land Size : 839 sqm

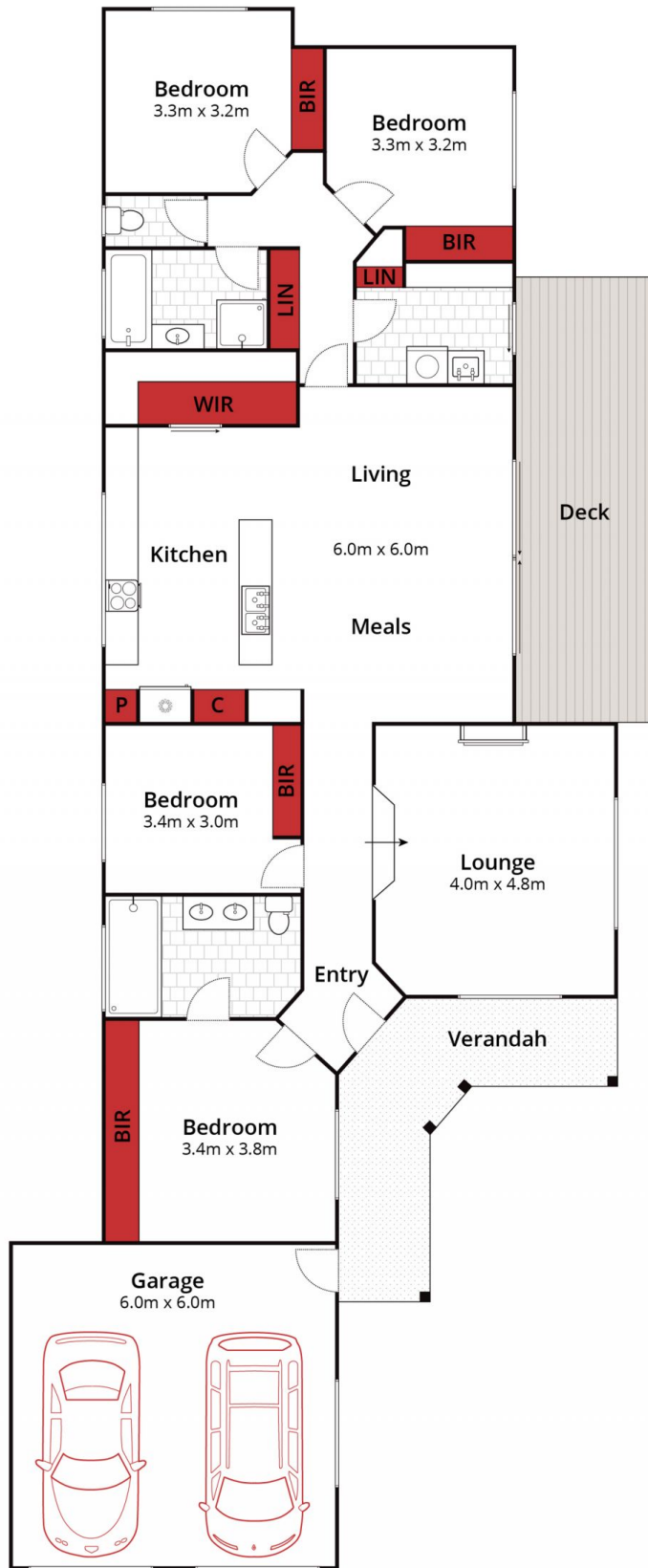
View : <https://www.ballaratrealestate.com.au/sale/vic/ballarat-western-district/mount-helen/residential/house/6792927>



David Morrison
5331 2233
0438 342 227



Oscar Currell
03 53312233
0499 070 759



Approx House Area 196m² 4 2 2

Whilst bwrn.com.au has made every attempt to ensure the accuracy of the floor plan contained here, measurements are approximate and no responsibility is taken for any error, omission, or mis-statement. This plan is for illustrative purposes only.

2 Park Lane, Mount Helen

