



30 Mimosa Avenue Alfredton VIC

3 1 2

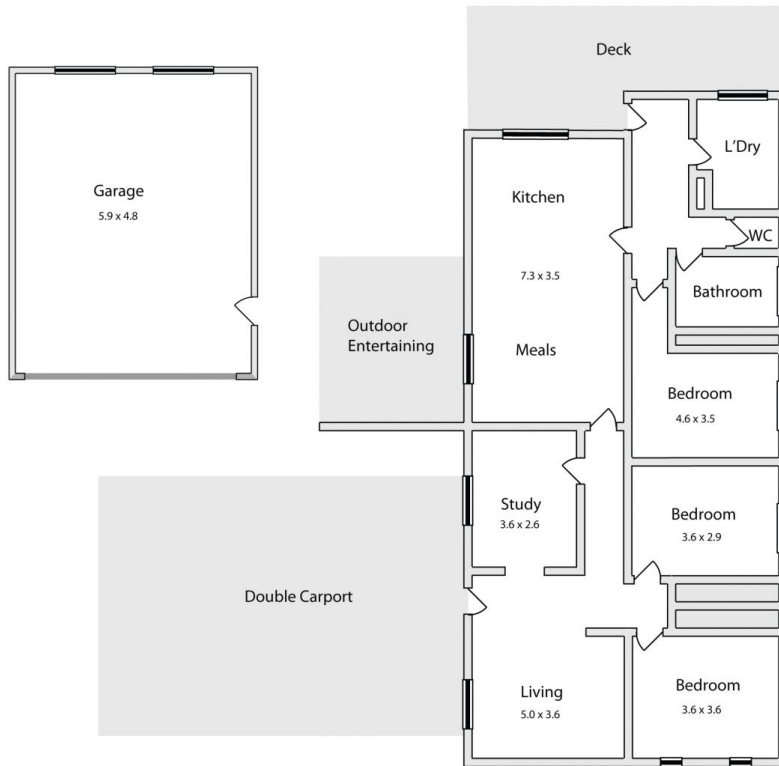
This property is in a brilliant location so close to the Arch of Victory, primary schools, high schools, Ballarat CBD and shopping at either Lucas or Aldi Supermarkets. In original condition and sitting on a generous block it has scope for so much value to be added. The brick veneer, solid residence in one of Alfredton's stunning treelined streets is fully of potential and boasts three bedrooms all with built in robes, spacious family bathroom, a fully functional kitchen with ample bench and cupboard space, stainless steel appliances, separate dining and living area, gas central heating, internal laundry and a huge double garage plus additional carport. Outside offers a good size secure rear yard and outdoor decking area. In a such a brilliant location this one is sure to be popular! Contact Lachlan Sylvia for more information today.

Price : \$ 530,000
Land Size : 729 sqm
View : <https://www.ballaratrealestate.com.au/sale/vic/ballarat-western-district/alfredton/residential/house/6821105>



Lachlan Sylvia
03 53312233
0458 068 234

30 Mimosa Ave Alfredton



This plan is for illustrative purposes only, floor plan proportions and scale are approximate. Plan prepared by PLP Ballarat © 2021 for Ballarat Real Estate.



Contact: Lachlan Sylvia 0458068234