

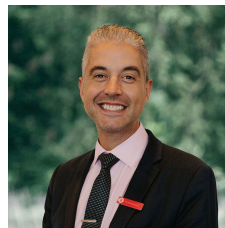


212 Lylia Avenue Mount Clear VIC

3 2 2

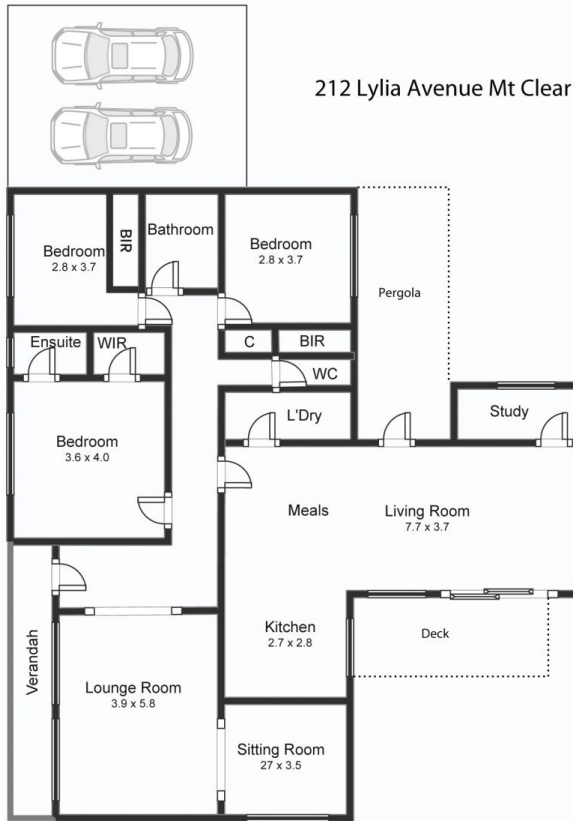
Situated in ever-popular Mount Clear is this spacious, beautifully presented three-bedroom brick veneer home sitting a large 834m² approx. allotment. In close proximity to Midvale shopping strip, supermarket, walking distance to primary and secondary schools, public transport and more. The home features three good sized bedrooms with the master comprising of an ensuite and walk in robe. The updated central family bathroom with separate toilet services the other two bedrooms. On entry you are welcomed by a large front living area with a feature fire place and study nook which leads through to the open plan dining and large kitchen, incorporating 900mm Smeg oven and cooktop. Outside, the home features a generous alfresco area perfect for entertaining and a secure large rear yard. There are stunning established gardens at the front. The property boasts many fur ...

Price : \$ 615,000
Land Size : 834 sqm
View : <https://www.ballaratrealestate.com.au/sale/vic/ballarat-western-district/mount-clear/residential/house/6895332>



Jay Kalogerakis
 03 53312233
 0430200663

212 Lyia Avenue Mt Clear



This plan is for illustrative purposes only, floor plan proportions and scale are approximate. Plan prepared by PLP Ballarat © 2022 for Ballarat Real Estate.



Contact: Jay Kalorgorakis 0430200663