



14 Millford Court Invermay Park VIC

3 2 2

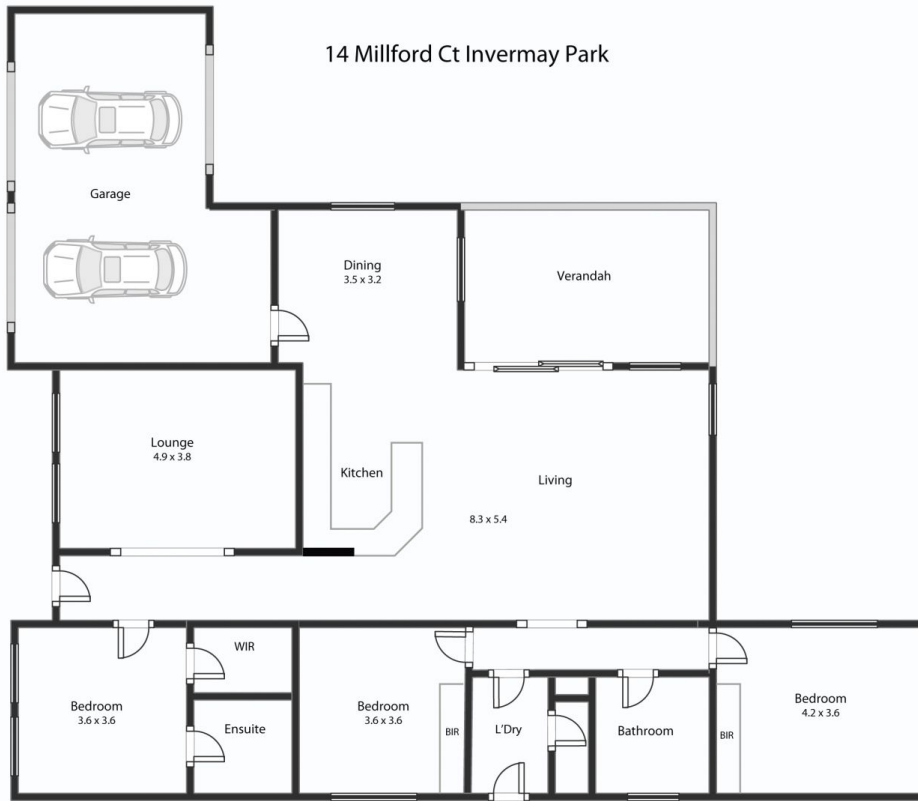
Positioned in an exclusive and quiet court in Invermay Park is this beautifully maintained brick home. The location is sought after for its proximity to Midlands Golf Club, Northway Shopping Center and Ballarat CBD. The house was built by a reputable local builder and is in fantastic condition with nothing to do but move in and enjoy an excellent lifestyle. The house sits on a generous block of around 849m2 with well manicured gardens and a double garage with drive through access to the back yard. There is further storage or workshop in the garage and plenty of space for the caravan to the side. Inside the home you have a large open plan kitchen, meals and living area that opens up perfectly to your outdoor entertaining area. There is a second separate lounge room at the front of the home. The master bedroom has walk in robe and ensuite while there are two f ...

Price : \$ 645,000
Land Size : 849 sqm
View : <https://www.ballaratrealestate.com.au/sale/vic/ballarat-western-district/invermay-park/residential/house/6921193>



Dominic Morrison
 5331 2233
 0409 557 461

14 Millford Ct Invermay Park



This plan is for illustrative purposes only, floor plan proportions and scale are approximate. Plan prepared by PLP Ballarat © 2022 for Ballarat Real Estate.



Contact: Dominic Morrison 0409557461