



22 Stamford Street Wendouree VIC

3 1 4

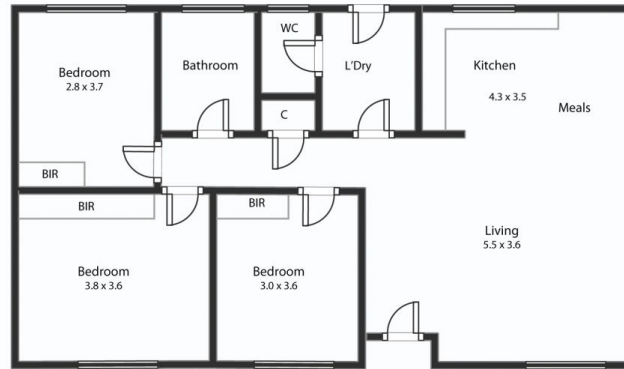
Positioned in a popular central Wendouree location close to Stockland Shopping Center, Ballarat Grammar, Wendouree Train Station and Lake Wendouree is this beautifully maintained brick veneer home. The home was fully renovated just a few years ago with a large open plan kitchen meals and living area the centerpiece. There are three bedrooms, two with built in robes and a bathroom with separate bath and shower. Other features inside include a full laundry, Rinnai gas heating, split system and fresh carpets and blinds. Outside you have a large enclosed yard, double garage plus workshop and undercover entertaining area. This home is ready to move in and enjoy or an excellent investment. The exclusive listing agent Dominic Morrison looks forward to meeting you at another busy Ballarat Real Estate open home.

View : <https://www.ballaratrealestate.com.au/sale/vic/ballarat-western-district/wendouree/residential/house/6939685>



Dominic Morrison
5331 2233
0409 557 461

22 Stamford St Wendouree



This plan is for illustrative purposes only, floor plan proportions and scale are approximate. Plan prepared by PLP Ballarat © 2022 for Ballarat Real Estate.



Contact: Dominic Morrison 0409 557 461