



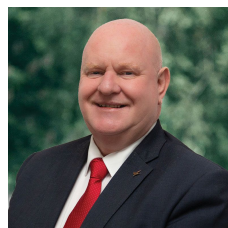
**34 Auburn Drive Smythes Creek VIC**

3 2 1

If you are looking for a home in a great location close to the Delacombe Town Centre then this designer home will be sure to impress. The master bedroom is located upstairs and has been designed with a luxurious feel that boasts a study nook offering relaxing views. The large ensuite contains a double shower, toilet and stone top vanity along with a substantial sized walk in Robe. The other two bedrooms are located downstairs with both having built in Robes and being serviced by a centrally located bathroom. The home has a European laundry. The timber staircase and floating floors add an element of luxury to this designer home. Down stairs is a well-appointed kitchen with stainless steel appliances incorporating a 600mm oven, gas cooktop, 24 place dishwasher, double stainless steel sink. You will love the stone benchtops and large walk in pantry that has a p ...

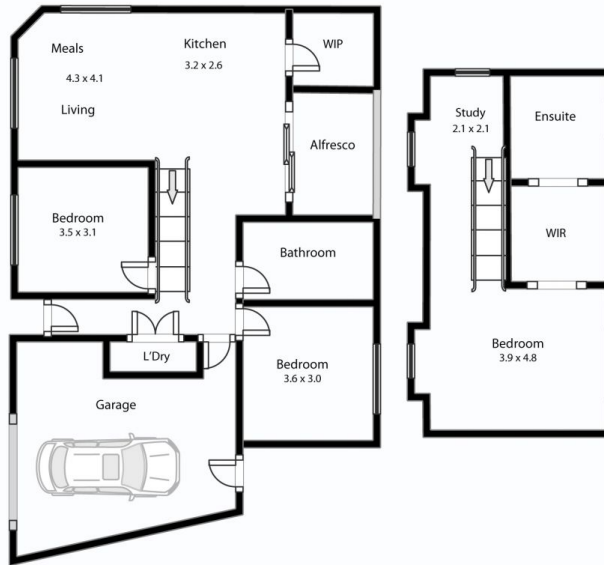
**Price** : \$ 545,000

**View** : <https://www.ballaratrealstate.com.au/sale/vic/ballarat-western-district/smythes-creek/residential/house/6965653>



**Terry Richardson**  
03 53312233  
0487 516 260

## 34 Auburn Drive Smythes Creek



This plan is for illustrative purposes only, floor plan proportions and scale are approximate. Plan prepared by PLP Ballarat © 2022 for Ballarat Real Estate.



Contact: Terry Richardson 0487 516 260