

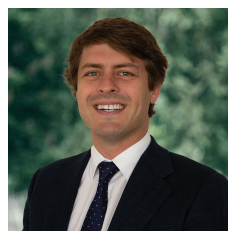


11a Sainsbury Court Mount Clear VIC

3 2 2

Holding a quiet position tucked away on a peaceful court lies this brand new three bedroom townhouse ready for you to move in. Located within walking distance of the Midvale Shopping Centre allows an easy lifestyle providing shopping, medical center, gym and food outlets at your fingertips, while also residing close to primary and secondary schools and a short drive to the popular Federation University. The brick home has been well built and holds the modern features expected in a new home. Inside you will find three well sized bedrooms with ensuite and walk in robe to master while the remaining two have built in robes. The open kitchen provides good bench space and modern appliances such as gas oven and stove as well as dishwasher. The open living and dining provides a space to enjoy meals and family time. The family bathroom holds separate bath and shower. ...

Price : \$ 498,000
Land Size : 422 sqm
View : <https://www.ballaratrealestate.com.au/sale/vic/ballarat-western-district/mount-clear/residential/townhouse/7076884>

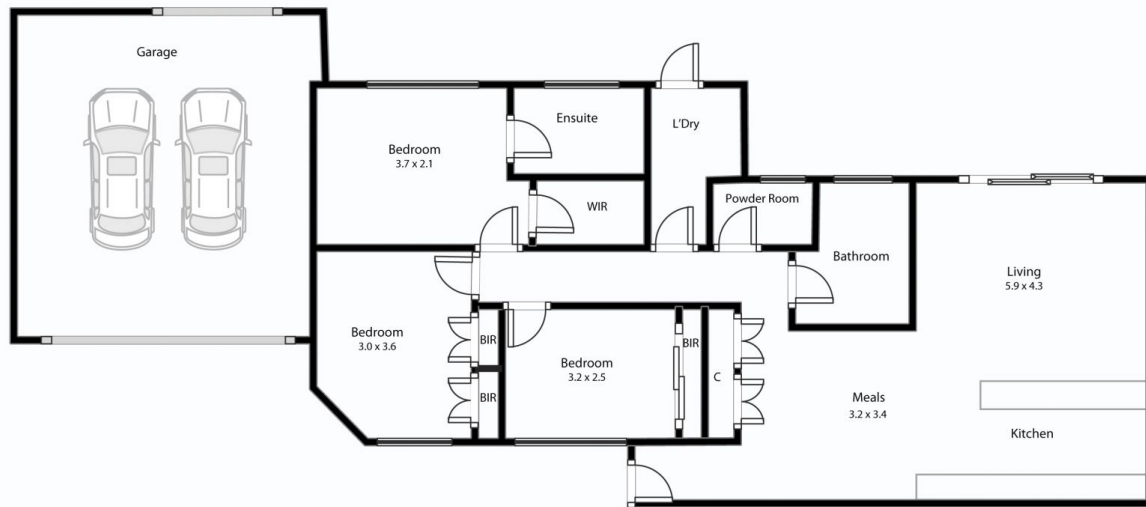


Dominic Morrison
5331 2233
0409 557 461



Mitchell Burgess
03 5331 2233
0458019897

11 Sainsbury Crt Mt Clear



This plan is for illustrative purposes only, floor plan proportions and scale are approximate. Plan prepared by PLP Ballarat © 2022 for Ballarat Real Estate.



Contact: Dominic Morrison 0409557461