



6 Patriot Crescent Smythes Creek VIC

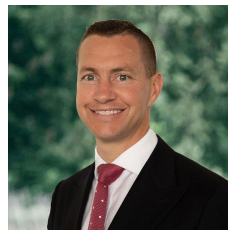
4 2 2

Welcome to 6 Patriot Crescent, Smythes Creek. A brand-new home packed with features and space for the whole family with 4 bedrooms and 3 living areas, this home is sure to impress. Upon entering the home through the large timber pivot front door, you are welcomed by a wide hallway, a neutral-toned grey palette that carries throughout the home with hybrid timber flooring, soaring 2700mm ceilings and high series doors giving this home a real sense of grandeur. The front formal living room is the first room to the right and overlooks the front manicured landscaped garden. A great space for a second living zone or parents' retreat. The Main bedroom is next along the hallway, with soft carpet underfoot, a WIR and a striking ensuite complete with stone benchtops, separate WC, spacious shower and double sinks to vanity complete with LED mirrors it is sure to make a ...

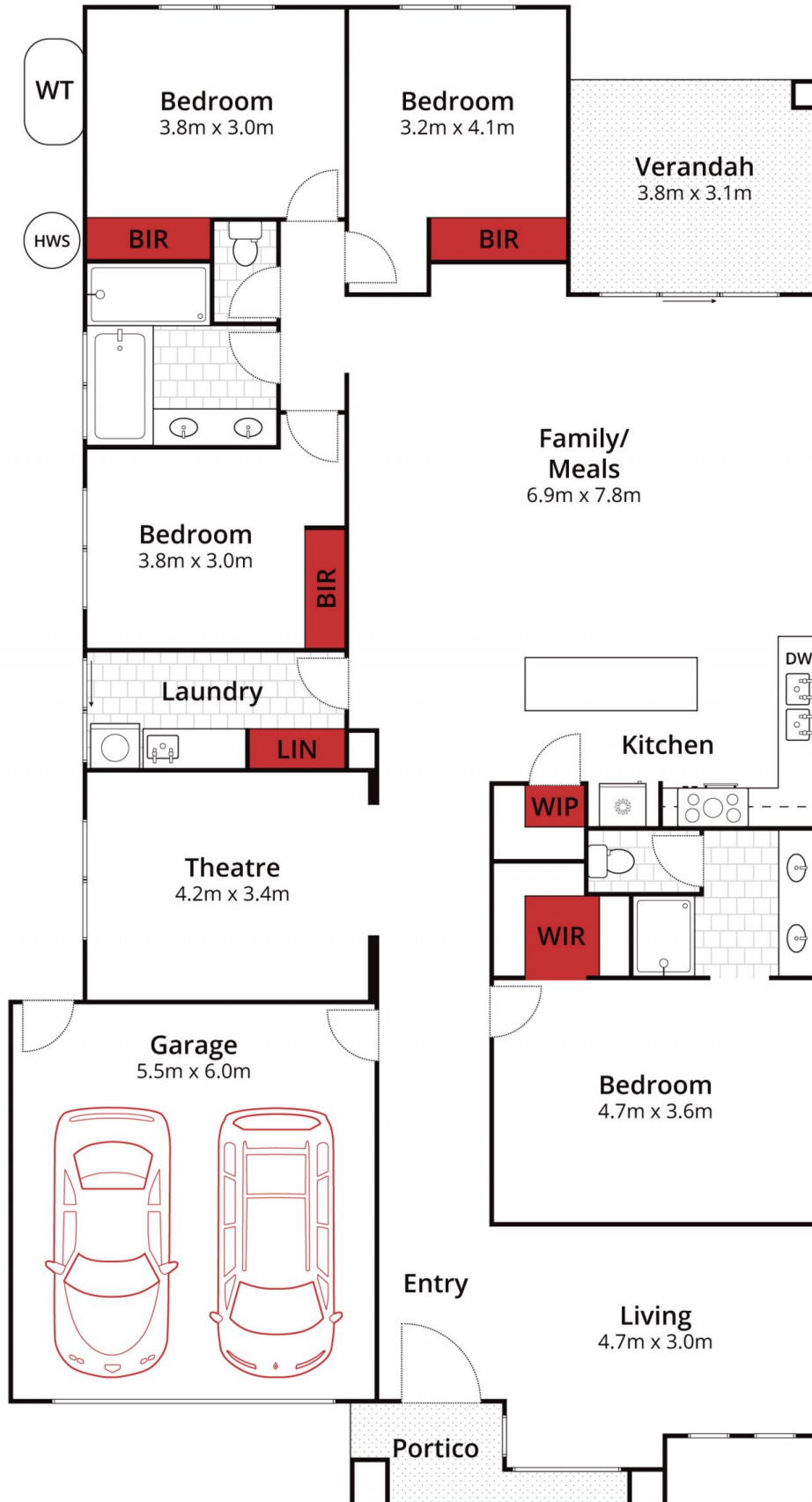
Price : \$ 685,000

Land Size : 480 sqm

View : <https://www.ballaratrealestate.com.au/sale/vic/ballarat-western-district/smythes-creek/residential/house/7123669>



Damian Larkin
03 53312233
0417 088 755



Approx House Area 230m²
 Approx Land Area 480m²



Whilst bwr.com.au has made every attempt to ensure the accuracy of the floor plan contained here, measurements are approximate and no responsibility is taken for any error, omission, or mis-statement. This plan is for illustrative purposes only.

6 Patriot Crescent, Smythes Creek

