



29 Flewin Avenue Miners Rest VIC

4 2 2

Set on approx. 604m², and situated in an established and quiet street within Miners Rest, is this almost 4-year-old family home. Featuring side access with huge concreted area that is ideal for the caravan, boat, trailer or additional car accommodation.

The home comprises spacious light filled master bedroom at the front with a large WIR leading through to the generous ensuite, featuring oversized shower and double vanity offering an abundance of storage. As you make your way down the hallway the space opens up into a massive open plan kitchen, living and dining area flooded with natural light, overlooking the backyard. The entertainer's kitchen includes all quality stainless steel appliances featuring 900mm electric oven and gas cooktop, stone benchtops and a generous walk-in pantry satisfying all your

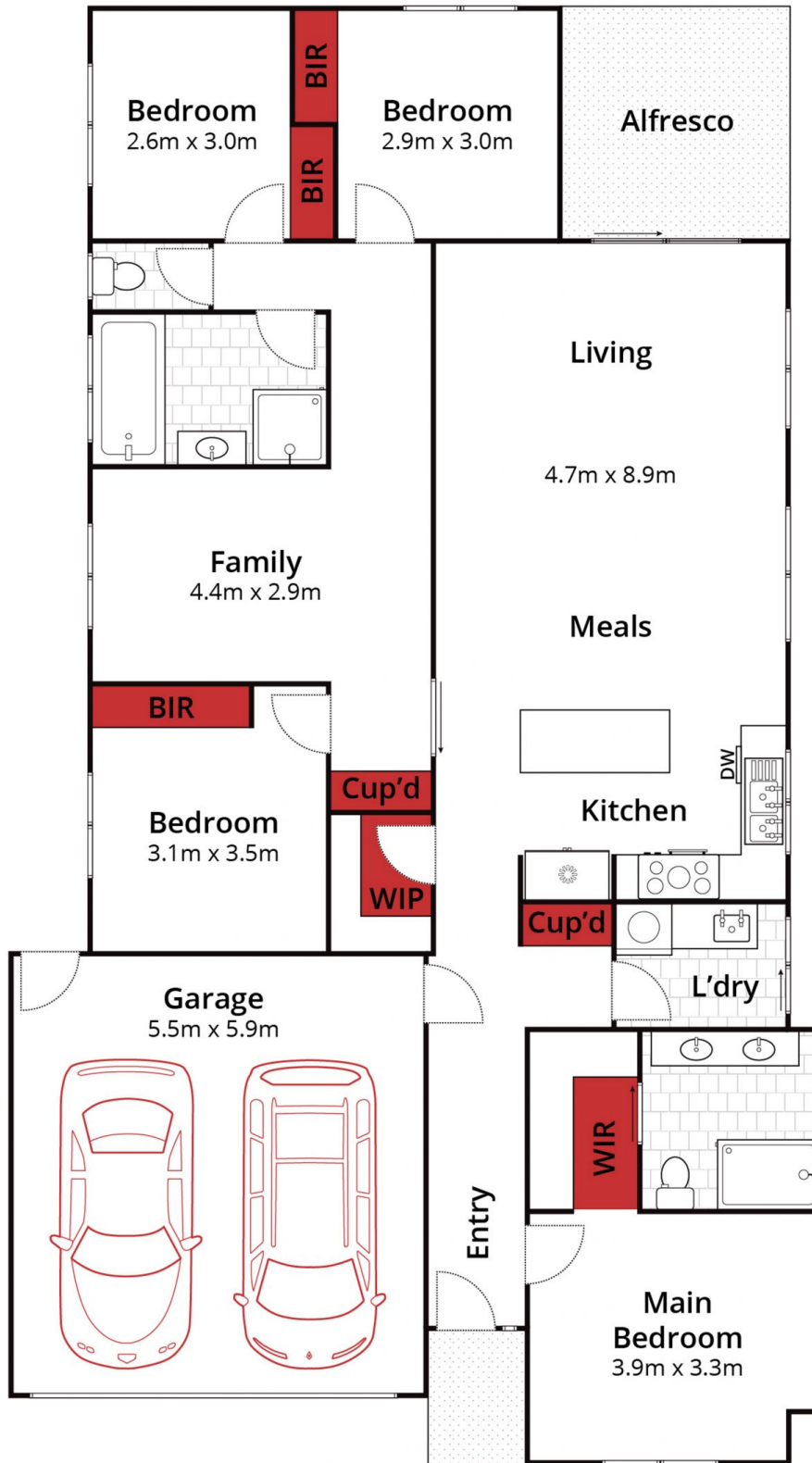
Price : \$ 620,000


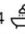
Land Size : 604 sqm

View : <https://www.ballaratrealestate.com.au/sale/vic/ballarat-western-district/miners-rest/residential/house/7123670>



Jo Thornton
03 53312233
0409356478



Approx House Area 170m²   

Whilst bwrn.com.au has made every attempt to ensure the accuracy of the floor plan contained here, measurements are approximate and no responsibility is taken for any error, omission, or mis-statement. This plan is for illustrative purposes only.

29 Flewin Avenue, Miners Rest

Ballarat
Real Estate

