



**820 Bond Street Mount Pleasant VIC**

2 1 1

Situated in the ever-popular suburb of Mount Pleasant offering close proximity to Ballarat Train Station, a major shopping precinct, some of Ballarat's best cafes and more. This charming brick home retains its attractive features inside and out. Boasting two large bedrooms, large living area at the front of the home, recently updated kitchen/meals area and a practical central bathroom. The features continue with stunning polished timber floors, central heating throughout, off street parking with a single carport easy to maintain rear yard. This property will be extremely popular with first home buyers, renovators and investors looking to expand their portfolio and is a must-see for anyone wanting to secure within close proximity to the centre of town.

**Price** : \$ 425,000

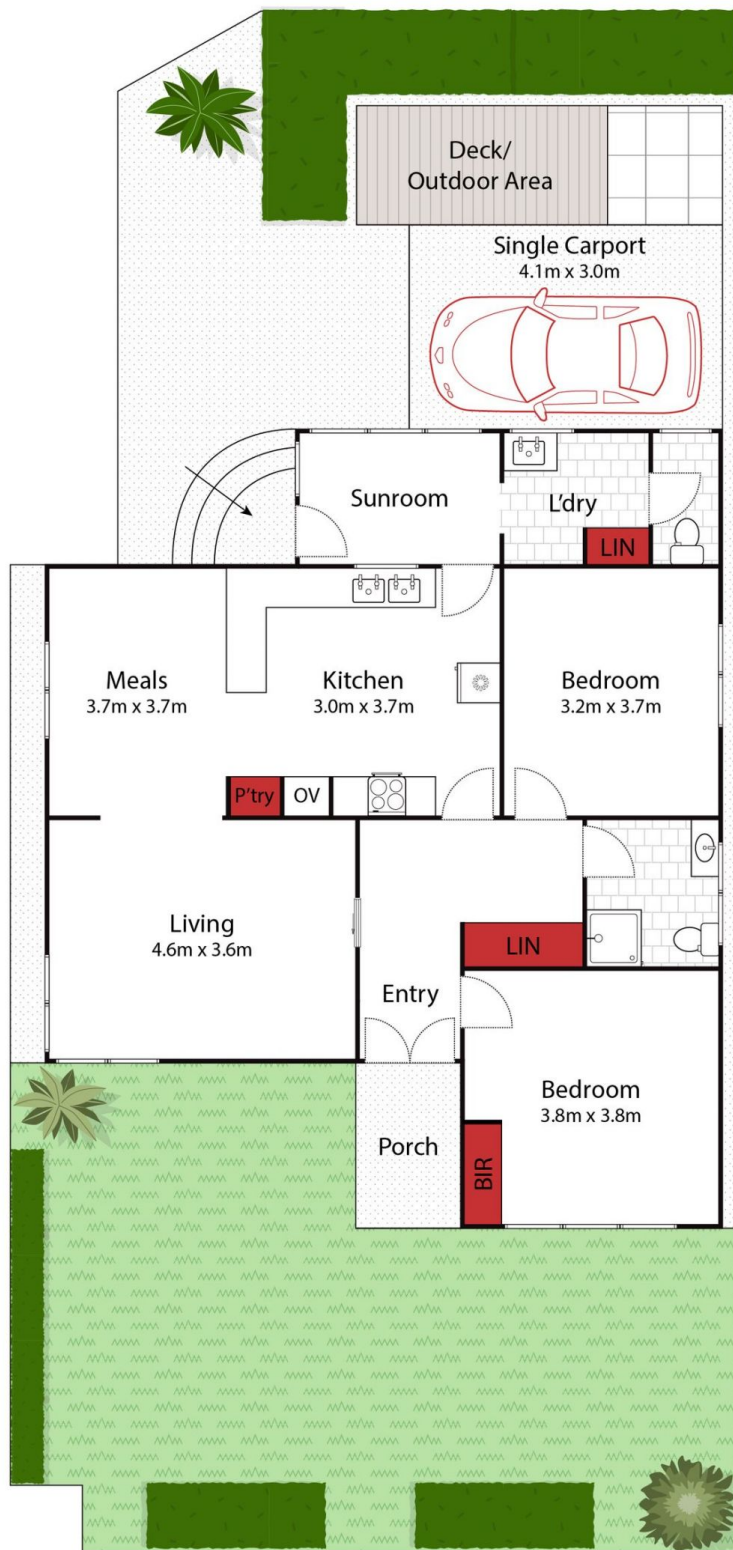
**View** : <https://www.ballaratrealestate.com.au/sale/vic/ballarat-western-district/mount-pleasant/residential/house/7134944>



**David Morrison**  
5331 2233  
0438 342 227



**Oscar Currell**  
03 53312233  
0499 070 759



Approx House Area 99m<sup>2</sup>  
Approx Land Area 300m<sup>2</sup>



Whilst [bwrn.com.au](http://bwrn.com.au) has made every attempt to ensure the accuracy of the floor plan contained here, measurements are approximate and no responsibility is taken for any error, omission, or mis-statement. This plan is for illustrative purposes only.

**820A Bond Street, Mount Pleasant**

