



13 Auburn Drive Smythes Creek VIC

3 2 3

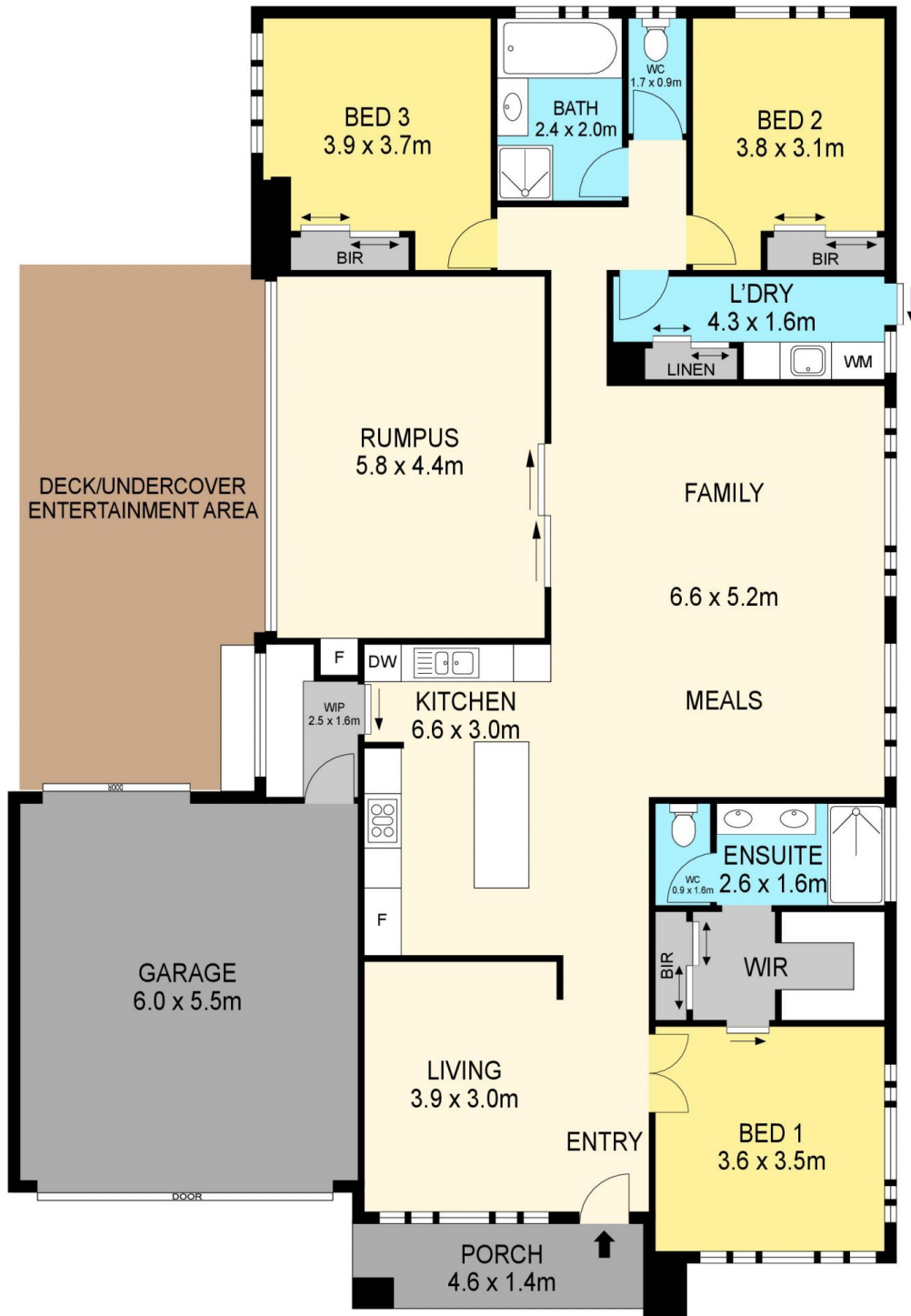
Positioned walking distance from the Delacombe Town Centre, multiple schools, shops and just a short drive to the Ballarat CBD, this property is sure to impress. Internally this property has everything comprising of three bedrooms, the master with large his & hers walk in robe and ensuite while the two remaining bedrooms have built in robes. With three living areas this home is not short on space and is ideal for anyone who loves to entertain. The open plan kitchen, meals and living space enjoys the northerly sun through large windows and the kitchen has high quality fixtures, appliances and a large butler's pantry. Externally, this home is just as impressive boasting an outdoor decking area with built in BBQ, fire pit, backyard access and double lock up garage. Other features of this home include, main bathroom, large laundry with storage, central heating, e ...

Price : \$ 620,000

View : <https://www.ballaratrealestate.com.au/sale/vic/ballarat-western-district/smythes-creek/residential/house/7163479>



Lachlan Sylvia
03 53312233
0458 068 234



DISCLAIMER

PLANS SHOWN ARE FOR MARKETING PURPOSES ONLY. ALL DIMENSIONS ARE APPROXIMATE AND NOT TO SCALE. THEY ARE SUBJECT TO ERRORS AND INACCURACIES AND NO LIABILITY WILL BE ACCEPTED. INTERESTED PARTIES SHOULD MAKE THEIR OWN INQUIRES.

Ballarat
Real Estate

