



101 Clissold Street Black Hill VIC

3 2 2

Set on approx. 530m², on the fringe of Soldiers Hill and Ballarat Central, is this elevated brick veneer with stunning views across Ballarat, including the Town Hall and train station.

An immaculate period home oozing character and charm with high ceilings, lead light features, and double glazing throughout. The home comprises spacious master bedroom with ensuite, ceiling fan and walk in robe, a further two generous bedrooms both with ceiling fans, BIR and a central family bathroom including oversized shower, spa bath and excellent storage. The open plan kitchen, dining and/or living space features polished Baltic pine timber floors, wood heater, split system, skylight and being north facing is flooded with natural light. The kitchen itself is quality at every turn and includes 900mm oven and

Price : \$ 770,000
Land Size : 530 sqm
View : <https://www.ballaratrealestate.com.au/sale/vic/ballarat-western-district/black-hill/residential/house/7163482>



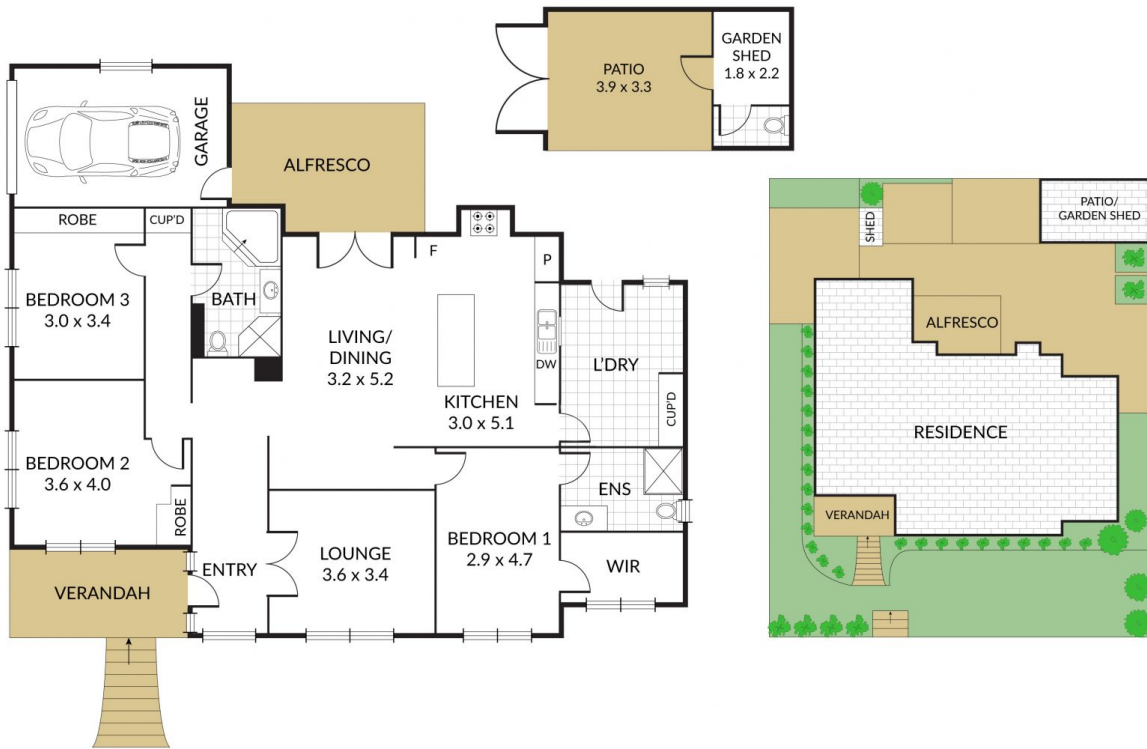
Jo Thornton
03 53312233
0409356478

Internal 165m² External 365m² Total 530m²

101 Clissold Street, **Black Hill**



3 x 2 x 1 x



NOTE: Every precaution has been taken to verify the accuracy of the above details. However, prospective purchasers are advised to make their own enquiries.