



33 Chifley Drive Delacombe VIC

3 2 2

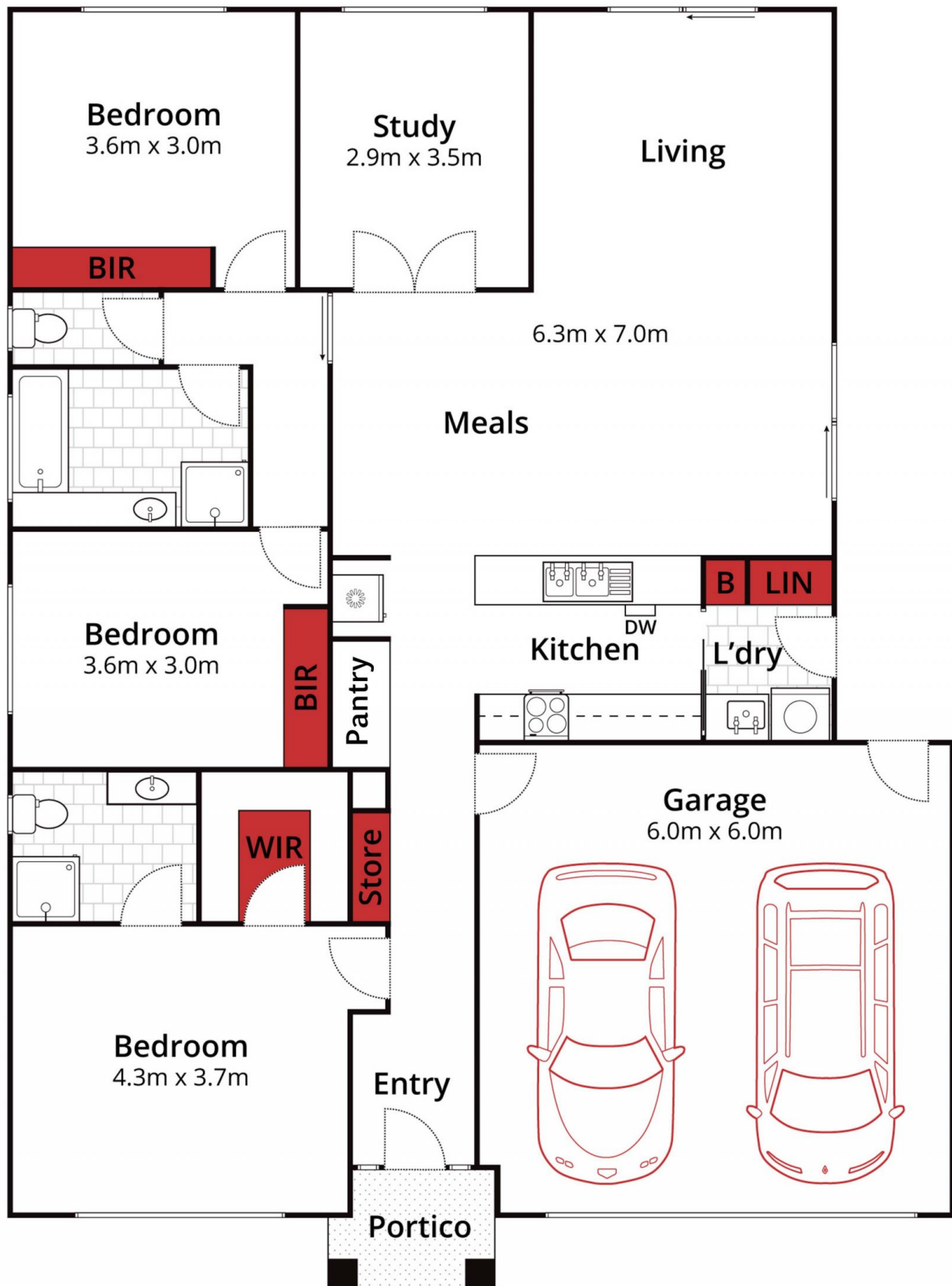
Positioned close to the popular Delacombe Town Centre and only a short distance to the CBD is this immaculate well maintained, low maintenance home. Features of the property include three bedrooms all with BIRS, master with walk in robe and ensuite, large open plan modern kitchen with an abundance of cupboards and bench space. You will love the generous living space filled with natural light. The main family bathroom is a delight with bath and shower and separate toilet. An extra feature is the study perfect for a home office. The home is kept comfortable all year round with gas ducted heating throughout and a split system air conditioner. Externally you will find a double lock up garage with direct internal access, low maintenance gardens and an enclosed rear yard.

Homes of this quality don't last long, be sure to call the exclusive listing agent Tash ...

Price : \$ 535,000
Land Size : 329 sqm
View : <https://www.ballaratrealestate.com.au/sale/vic/ballarat-western-district/delacombe/residential/house/7163483>



Tash Guinea
03 53312233
0439 831 058



Approx House Area 170m²

Approx Land Area 328m²



Whilst bwm.com.au has made every attempt to ensure the accuracy of the floor plan contained here, measurements are approximate and no responsibility is taken for any error, omission, or mis-statement. This plan is for illustrative purposes only.

33 Chifley Drive, Delacombe

Ballarat
Real Estate

