



16 Watson Drive Mount Pleasant VIC

3 2 2

Situated in the increasingly popular suburb of Mt Pleasant between Sovereign Hill and the Ballarat CBD is this tastefully renovated and spacious family home packed with unique features. The master bedroom features a luxe ensuite and walk in robe while the other two bedrooms are of good size with built in robes and study desk. The sun-drenched kitchen, living and dining spaces are truly the heart of this home and make entertaining a breeze featuring custom soft closing cabinetry, stone benchtops, LED sensor light, a Belling oven, dishwasher and more. The main family bathroom is one of a kind offering heated floors and towel rails, a stunning free-standing bath, open rain head shower and double vanity with feature lights. Outside the home features two incredible entertaining areas. One is enclosed boasting a built-in combustion fire, BBQ and TV cavity while th ...

Price : \$ 580,000

View : <https://www.ballaratrealestate.com.au/sale/vic/ballarat-western-district/mount-pleasant/residential/house/7171197>

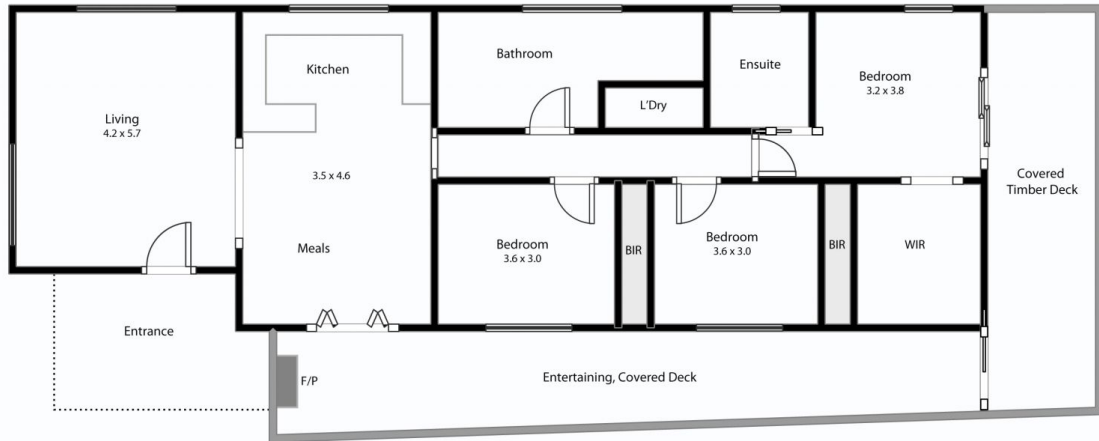


David Morrison
5331 2233
0438 342 227



Oscar Currell
03 53312233
0499 070 759

16 Watson Drive Mt Pleasant



This plan is for illustrative purposes only, floor plan proportions and scale are approximate. Plan prepared by PLP Ballarat © 2022 for Ballarat Real Estate.

Ballarat
Real Estate



David Morrison 0438 342 227
Oscar Currell 0499 070 759