



### 617 Dana Street Ballarat Central VIC

3 2 2

This attractive Victorian red brick home is located in inner Ballarat Central which is sought after for its tree lined streets and stunning heritage homes. This location enjoys close proximity to top schools, Ballarat CBD, hospital precinct, Train Station and Lake Wendouree. Positioned on a corner block, the north facing home enjoys a commanding street presence with the practicality of side access to a carport for two large cars. The historic home is filled with dramatic period features such as sweeping high pressed metal ceilings, detailed cornice work, feature exposed brick wall and stain glass windows. The kitchen, meals and living are open plan and generous. The lounge features an open fire place while the kitchen has a walk in pantry and quality SMEG appliances. There are three well sized bedrooms with the master enjoying ensuite. The main bathroom has ...

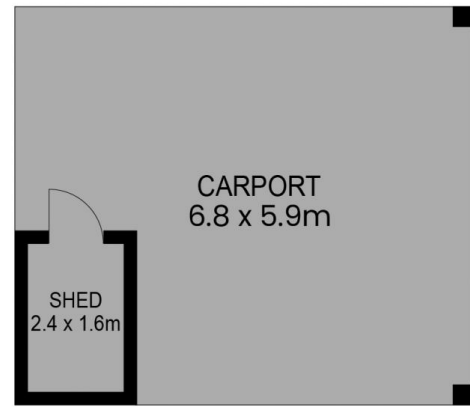
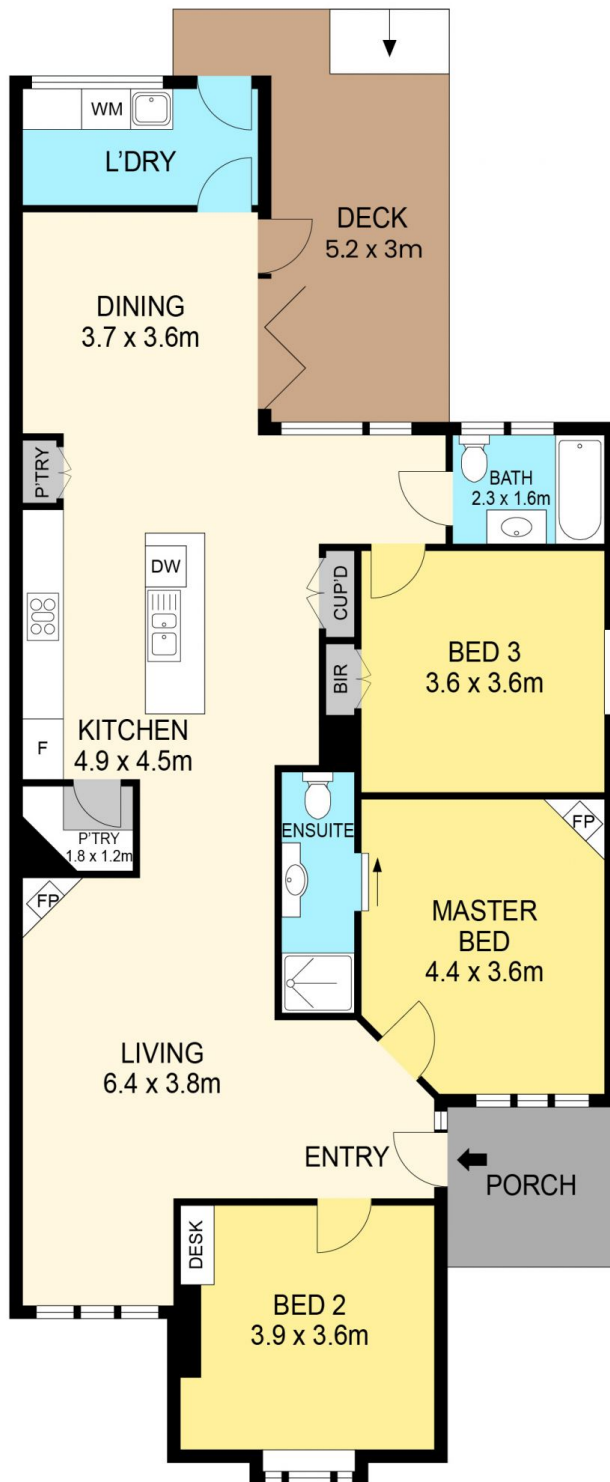
**Price** : \$ 1,030,000  
**Land Size** : 421 sqm  
**View** : <https://www.ballaratrealestate.com.au/sale/vic/ballarat-western-district/ballarat-central/residential/house/7178591>



**Dominic Morrison**  
5331 2233  
0409 557 461



**Mitchell Burgess**  
03 5331 2233  
0458019897



(NOT IN POSITION)

**DISCLAIMER**

PLANS SHOWN ARE FOR MARKETING PURPOSES ONLY. ALL DIMENSIONS ARE APPROXIMATE AND NOT TO SCALE. THEY ARE SUBJECT TO ERRORS AND INACCURACIES AND NO LIABILITY WILL BE ACCEPTED. INTERESTED PARTIES SHOULD MAKE THEIR OWN INQUIRES.

**Ballarat**  
Real Estate

