



13 Sidbury Avenue Wendouree VIC

4 1 2

Situated in a great Wendouree location, this brick home is ready for you to make your own. Internally the home comprises of four generously sized bedrooms, all with built in robes. Functional bathroom, a family room adjoining onto the kitchen/meals area with direct access to the impressive outdoor rear entertainment space. Externally, the large backyard is behind a lock up gate with carport before the lock up garage and the potential for an extension (STCA) or additional shedding or subdivision (STCA). Other features of this home include gas heating, evaporative cooling, large laundry and the ever-popular dual side access. Positioned just a short distance from schools, shops, Lake Wendouree and the Ballarat CBD this property is sure to be popular with all buyers looking for potential and investment. Call Blaise Newnham today 0423 175 643 and hit the enquiry ...

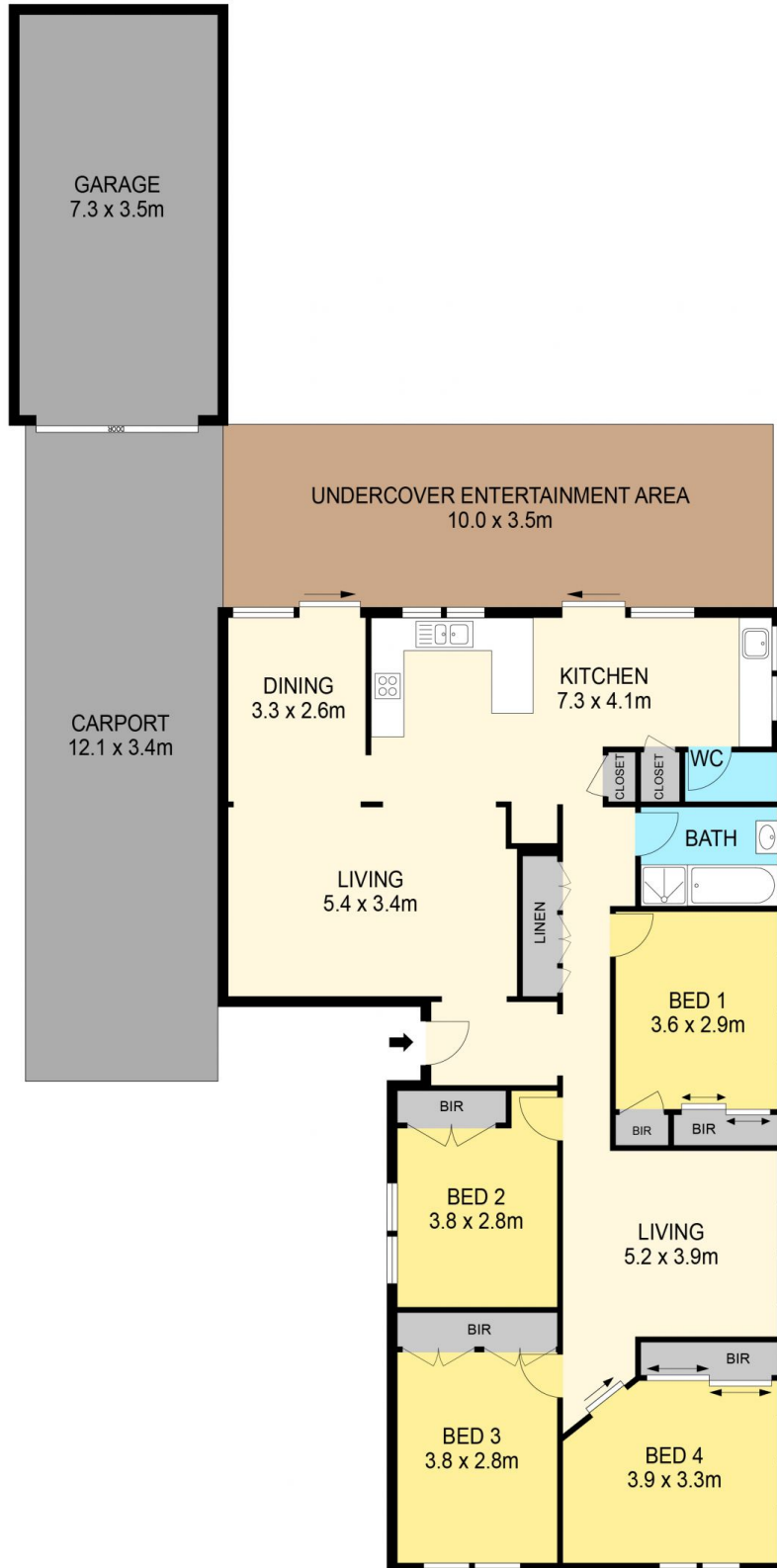
Price : \$ 485,000

Land Size : 823 sqm

View : <https://www.ballaratrealestate.com.au/sale/vic/ballarat-western-district/wendouree/residential/house/7178596>



Blaise Newnham
5331 2233
0423175643



DISCLAIMER

PLANS SHOWN ARE FOR MARKETING PURPOSES ONLY. ALL DIMENSIONS ARE APPROXIMATE AND NOT TO SCALE. THEY ARE SUBJECT TO ERRORS AND INACCURACIES AND NO LIABILITY WILL BE ACCEPTED. INTERESTED PARTIES SHOULD MAKE THEIR OWN INQUIRES.

Ballarat
Real Estate

