



9 Menhennet Drive Delacombe VIC

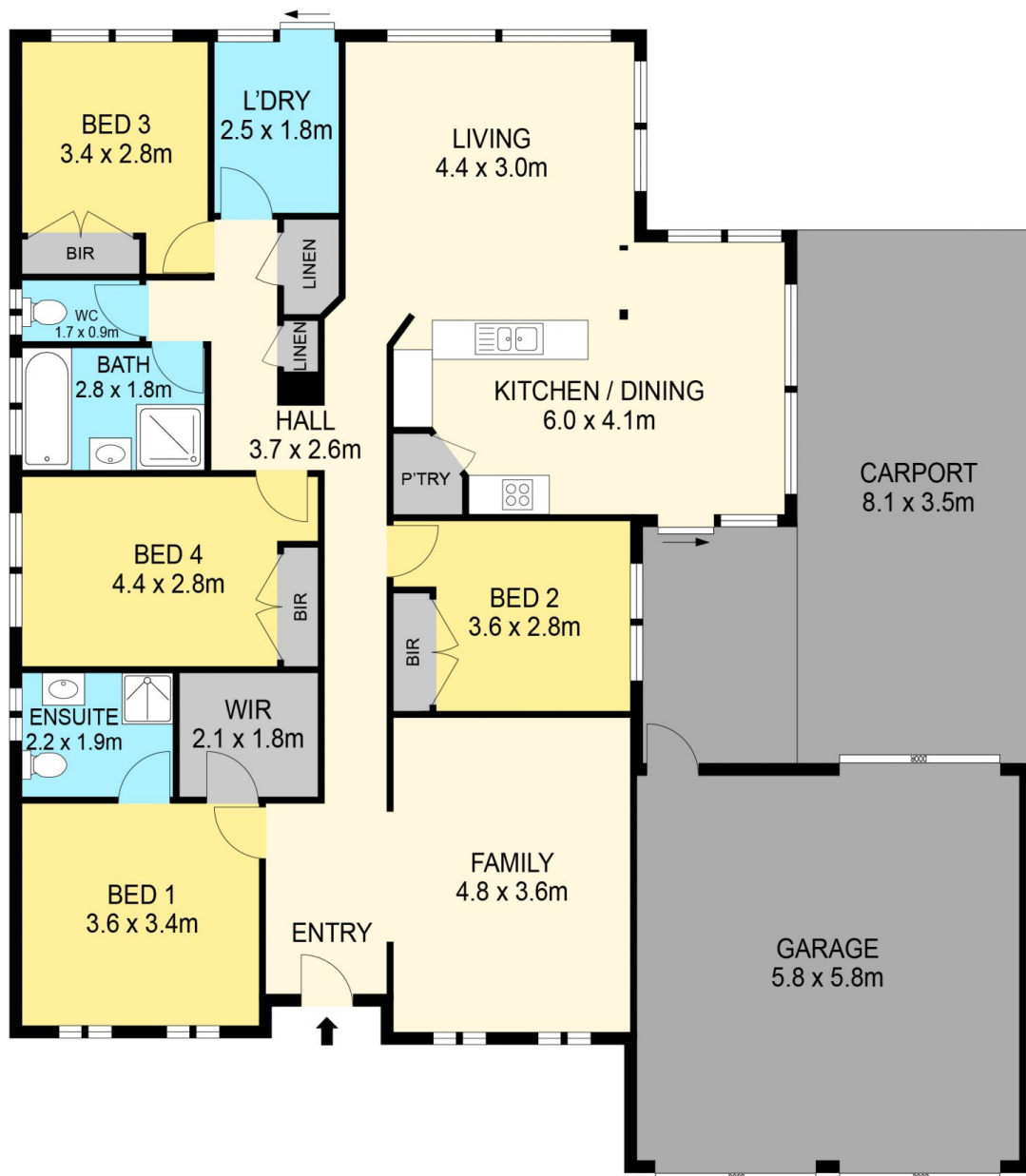
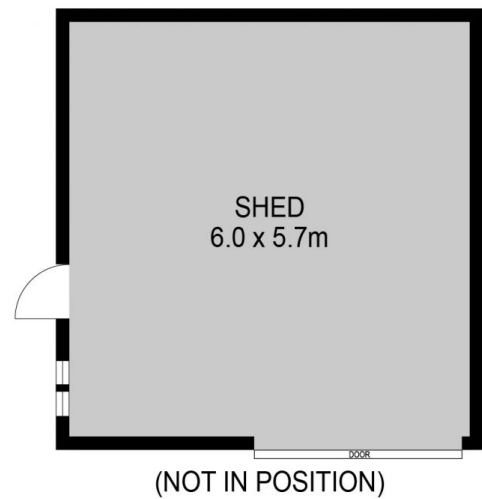
4 2 2

Situated on a 695m2 approx. allotment in a mature pocket of Delacombe, close to Phoenix College, Lumen Christi Primary School and the Delacombe Town Centre. This home comprises of four bedrooms, the master includes a walk in robe as well as an en-suite. There is also the bonus of an adult retreat or additional family living space, towards the front of the property. The home also has the addition of a rear kitchen with attached meals and living area, overlooking the outdoor entertainment space. The home has gas central heating and split system heating and cooling, oversized fridge space and updates throughout to make moving strain in an easy event. With a drive through double lock up garage to access the low maintenance back yard and rear shed/workshop. Call Blaise Newnham today on 0423 175 643 or hit the enquiry button to receive updates.

Price : \$ 600,000
Land Size : 695 sqm
View : <https://www.ballaratrealestate.com.au/sale/vic/ballarat-western-district/delacombe/residential/house/7178597>



Blaise Newnham
5331 2233
0423175643



DISCLAIMER

PLANS SHOWN ARE FOR MARKETING PURPOSES ONLY. ALL DIMENSIONS ARE APPROXIMATE AND NOT TO SCALE. THEY ARE SUBJECT TO ERRORS AND INACCURACIES AND NO LIABILITY WILL BE ACCEPTED. INTERESTED PARTIES SHOULD MAKE THEIR OWN INQUIRES.

Ballarat
Real Estate

