

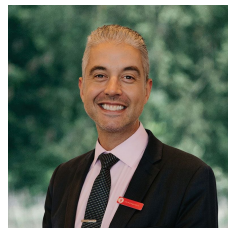


2 Adela Street Wendouree VIC

3 1 4

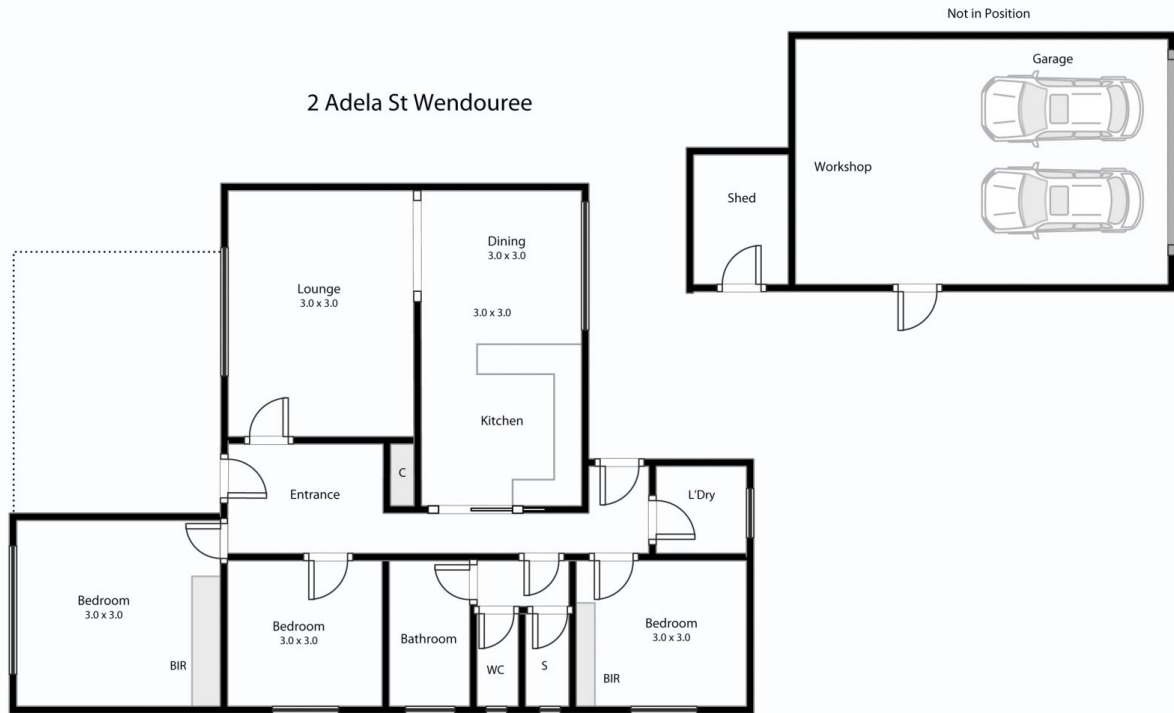
Located in the quiet pocket of Wendouree only a short distance from Stockland Shopping Centre, Western Highway and Wendouree Train station is this original, well-maintained home. Upon entering the recently painted home, you are greeted by a large formal lounge area with features including period cornicing, large windows and carpet with floorboards underneath. Leading through to the dining area you will enjoy the creature comfort of a large split system. The spacious period kitchen has all you need with generous cupboard space throughout. Three spacious bedrooms compliment the home, all include large BIR's. The bathroom is well presented and has a shower, separate bath and vanity with a separate toilet. Completing this attractive opportunity is a great size backyard ideal for kids with manicured gardens. There is also a 2 car garage with rear access with new ...

Price : \$ 460,000
Land Size : 590 sqm
View : <https://www.ballaratrealestate.com.au/sale/vic/ballarat-western-district/wendouree/residential/house/7186170>



Jay Kalogerakis
03 53312233
0430200663

2 Adela St Wendouree



This plan is for illustrative purposes only, floor plan proportions and scale are approximate. Plan prepared by PLP Ballarat © 2022 for Ballarat Real Estate.

Ballarat
Real Estate



Contact: Jay Kalogorakis 0430200663