



24 Chifley Drive Delacombe VIC

4 2 2

Positioned in a quiet street close to the popular Delacombe Town Centre and only a short distance to the CBD is this spacious quality four-bedroom family home. Featuring four bedrooms all with BIRS, master with walk in robe and ensuite. A modern kitchen with stainless steel 900mm gas stove top, oven and dishwasher. Two separate living areas that offer plenty of space for the entire family. You will enjoy being comfortable all year round with the gas central heating and evaporative cooling. Externally you will enjoy the new Apollo patio all ready to entertain with family and friends, a well-maintained low maintenance garden with plenty of room and a storage shed. DLUG with direct access and side access for the boat, caravan or trailer. Homes of this quality don't last long, be sure to call the exclusive listing agent Tash Guinea on 0439 831 058 to book your in ...

Price : \$ 595,000
Land Size : 540 sqm
View : <https://www.ballaratrealestate.com.au/sale/vic/ballarat-western-district/delacombe/residential/house/7186173>

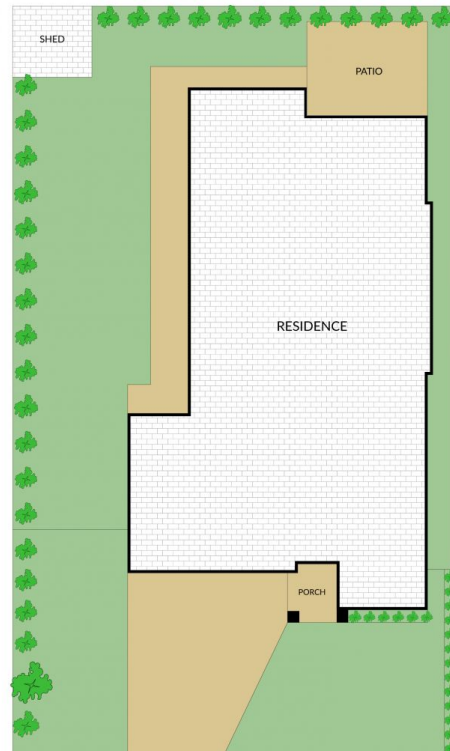
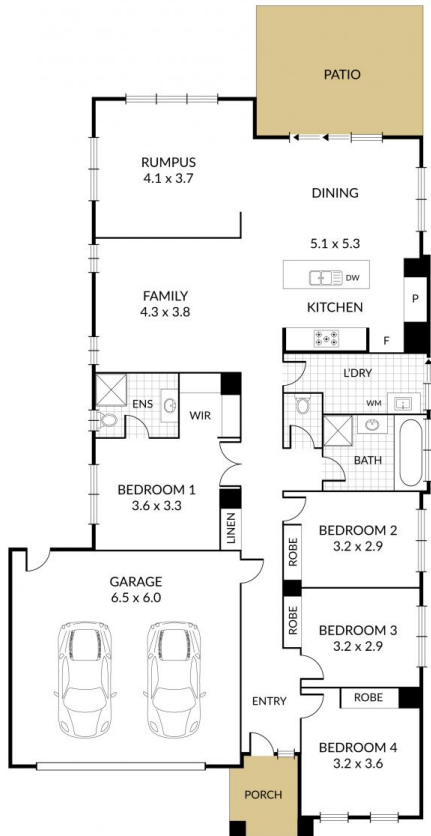


Tash Guinea
03 53312233
0439 831 058

Internal 205m² External 334m² Total 539m²

4 x  2 x  2 x 

24 Chifley Drive, **Delacombe**



NOTE: Every precaution has been taken to verify the accuracy of the above details. However, prospective purchasers are advised to make their own enquiries.