



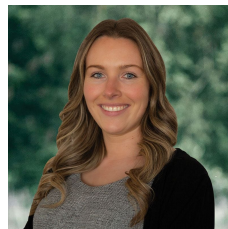
10 Shelley Street Wendouree VIC

3 1 6

Positioned on a generous block of around 647m² (approx) in the golden square of Wendouree close to Lake Wendouree, Mars Stadium, Howitt Street shopping and Ballarat Grammar is this attractive home. This location has it all with everything you need at your fingertips while remaining in a nice quiet street. Inside the home you will find three generous sized bedrooms. Two of the bedrooms feature BIRs. The family bathroom offers a large spa bath and shower and has a separate toilet. The large open plan living spaces is perfect for families with natural light flooding the area. Off the living area is a large kitchen with ample bench and cupboard space with a 900mm oven. The home is serviced with multiple split systems and gas heaters for warmth in the winter months. Outside the home has a large yard with side access to a big shed. A property with this charm and ...

Price : \$ 450,000

View : <https://www.ballaratrealestate.com.au/sale/vic/ballarat-western-district/wendouree/residential/house/7213485>



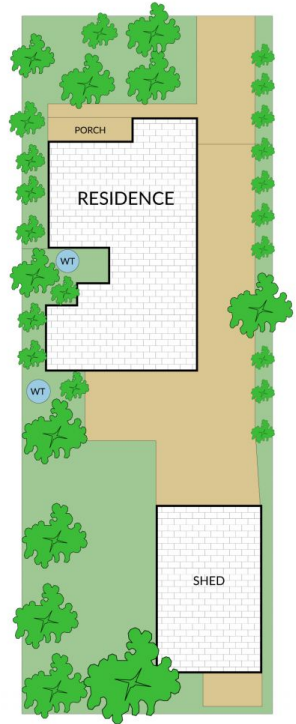
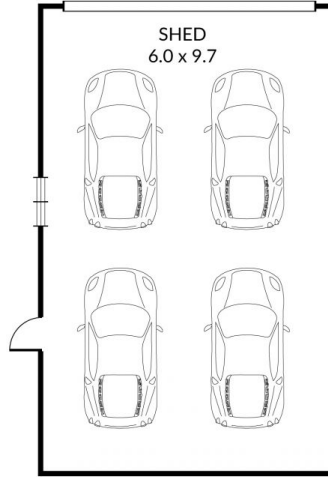
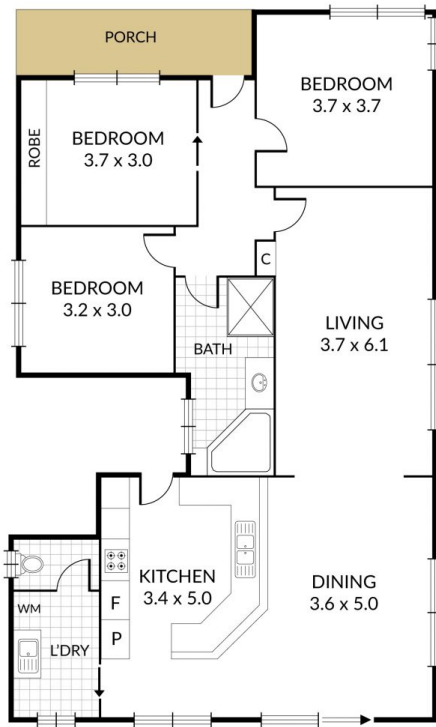
Sarah Hanley
0429579677

Internal 167m² External 479m² Land Size 646m²

10 Shelley Street, Wendouree



3 x 1 x 4 x



NOTE: Every precaution has been taken to verify the accuracy of the above details. However, prospective purchasers are advised to make their own enquiries.