



22 Primrose Street Wendouree VIC

3 1 3

Situated close to Stockland Wendouree, Lake Wendouree, Train Station, Ballarat CBD and the Western Freeway is this brilliant three bedroom home. Positioned on a generous allotment of approximately 665m², the property offers a large yard for the family or potential for future development (STCA). The house has been partially updated boasting a large living area that enjoys plenty of natural light, spacious kitchen and meals area, three good sized bedrooms, one of which has a built in robe, and a centrally located bathroom. The house is serviced by a gas heater as well as a split system. Externally, you will find a carport, backyard access and a large outdoor entertaining area. This one is sure to be popular so contact Lachlan Sylvia for more information today.

Price : \$ 355,000

Land Size : 665 sqm

View : <https://www.ballaratrealestate.com.au/sale/vic/ballarat-western-district/wendouree/residential/house/7220068>

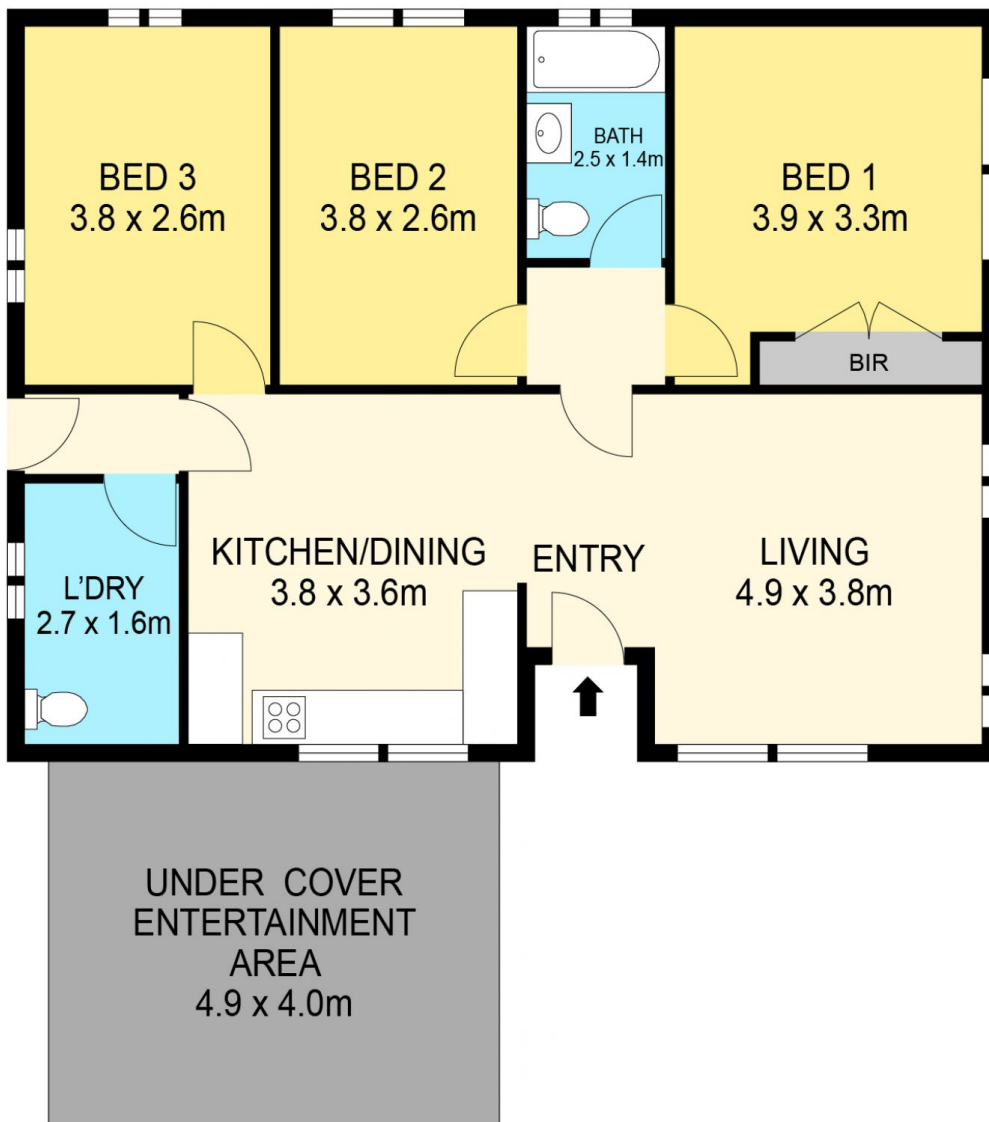


Lachlan Sylvia
03 53312233
0458 068 234

TH0510



(NOT IN POSITION)



DISCLAIMER

PLANS SHOWN ARE FOR MARKETING PURPOSES ONLY. ALL DIMENSIONS ARE APPROXIMATE AND NOT TO SCALE. THEY ARE SUBJECT TO ERRORS AND INACCURACIES AND NO LIABILITY WILL BE ACCEPTED. INTERESTED PARTIES SHOULD MAKE THEIR OWN INQUIRES.

Ballarat
Real Estate

