



219 Shire Avenue Mount Helen VIC

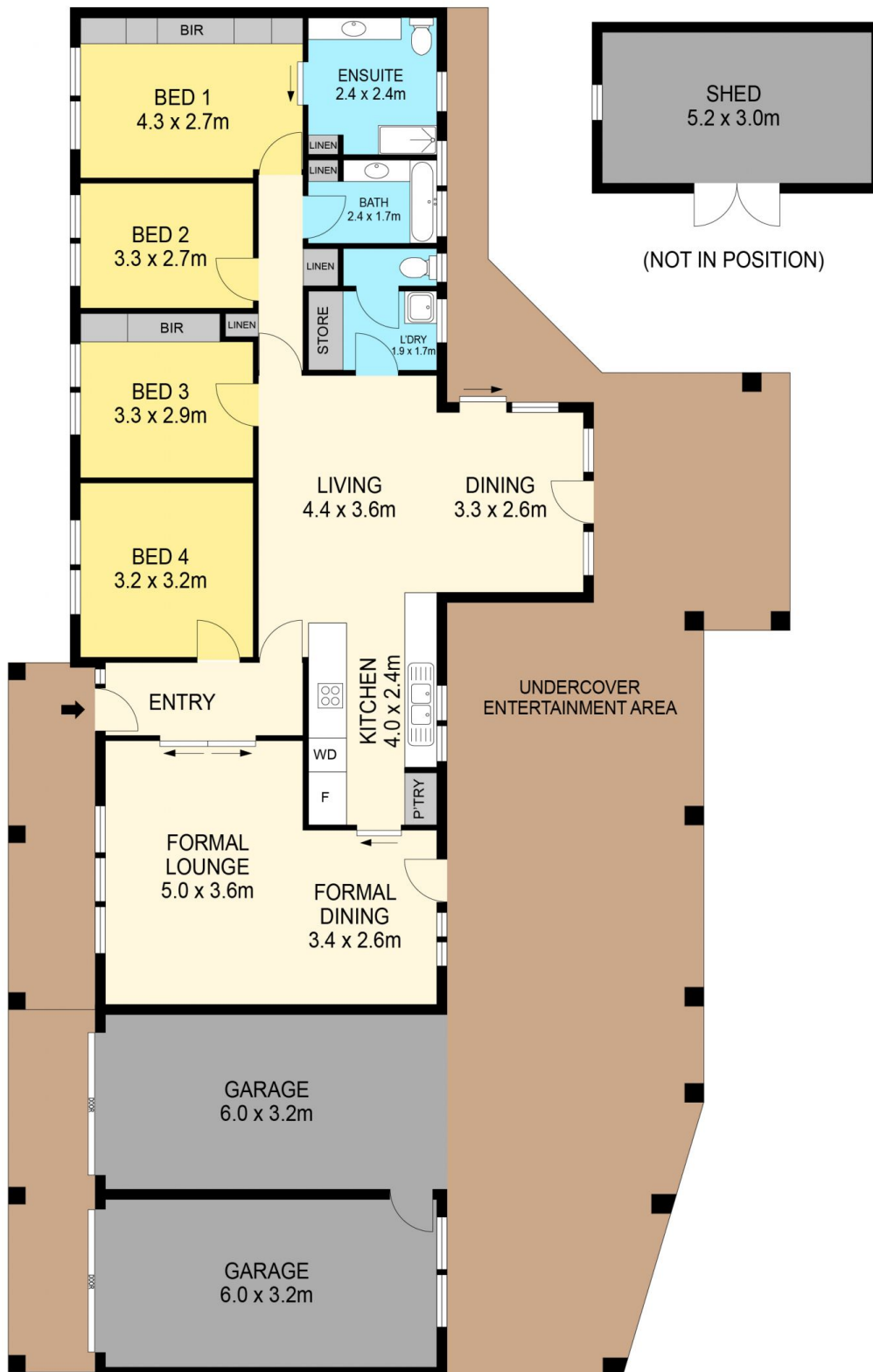
4 2 2

Positioned in the leafy setting of Mount Helen sits this well maintained brick home. Internally, this home features four bedrooms two of which have built in robes and the master with an ensuite. The formal lounge is positioned at the front of the home and looks out onto the beautiful front garden whilst enjoying plenty of natural light. The second living space is part of an open plan kitchen and meals area that makes up the centrepiece of the home. The kitchen has been updated with top quality fixtures and fittings. Externally, this home has everything situated on approximately 953m² with a large outdoor area, drive through access, single lock up garage, single lock up carport, gorgeous gardens and shedding. Other features of this home include, full laundry, main bathroom, separate toilet, split system cooling, central floor heating and solar. Located close ...

Price : \$ 630,000
Land Size : 953 sqm
View : <https://www.ballaratrealestate.com.au/sale/vic/ballarat-western-district/mount-helen/residential/house/7238578>



Lachlan Sylvia
03 53312233
0458 068 234



DISCLAIMER

PLANS SHOWN ARE FOR MARKETING PURPOSES ONLY. ALL DIMENSIONS ARE APPROXIMATE AND NOT TO SCALE. THEY ARE SUBJECT TO ERRORS AND INACCURACIES AND NO LIABILITY WILL BE ACCEPTED. INTERESTED PARTIES SHOULD MAKE THEIR OWN INQUIRES.

Ballarat
Real Estate

