



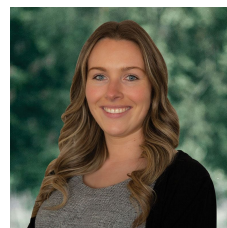
### 19 Malahide Drive Miners Rest VIC

3 2 2

Situated in popular Miners Rest is this beautifully presented brick home. Upon entering the home you are greeted with a lovely entryway which leads to a large study with access to the double garage, designed with enough room to house a caravan and roller door with access to the backyard. The master bedroom is complimented with WIR and ensuite. The two remaining bedrooms offer built in robes and are serviced by a central main bathroom which features bath, shower and separate toilet. The formal living room, open plan kitchen, dining and family zone enjoys an abundance of natural light and looks out to the spacious and low maintenance backyard. Enjoy the outdoors all year round with access to the undercover alfresco with blinds. Externally the home is positioned on a 745m<sup>2</sup> (approx.) block, features a large secure yard with garden shed and water tanks. This home ...

**Price** : \$ 580,000

**View** : <https://www.ballaratrealestate.com.au/sale/vic/ballarat-western-district/miners-rest/residential/house/7263588>




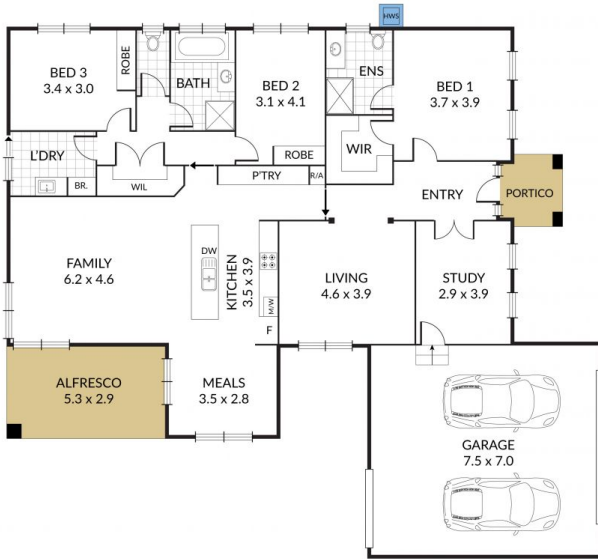
**Sarah Hanley**  
0429579677

Internal 222m<sup>2</sup> External 523m<sup>2</sup> Total 745m<sup>2</sup>

19 Malahide Drive, **Miners Rest**



3 x  2 x  2 x 



NOTE: Every precaution has been taken to verify the accuracy of the above details. However, prospective purchasers are advised to make their own enquiries.