



726 Tress Street Mount Pleasant VIC

3 1 2

Situated in the ever popular location of Mount Pleasant, close to schools, public transport, parks and only a short drive to the CBD is this sophisticated Californian Bungalow. Upon entering the home you are greeted with character and charm. The formal lounge is of generous size and features open fireplace and bay window providing natural light. There are three large bedrooms serviced by the central bathroom which offers bath, shower and toilet.

The kitchen is very functional with pantry, dishwasher and ample bench space. It adjoins the open plan living and meals area which looks out to the glorious deck and established gardens which take in the north westerly sunsets. The home is positioned on a 592m² (approx.) block with side access, carport with roller door, garage and garden shed.

This home is sure to be popular with families, couples and

Price : \$ 585,000

Land Size : 592 sqm

View : <https://www.ballaratrealestate.com.au/sale/vic/ballarat-western-district/mount-pleasant/residential/house/7263591>



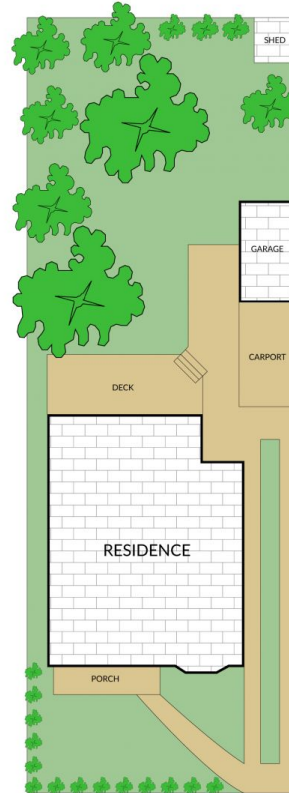
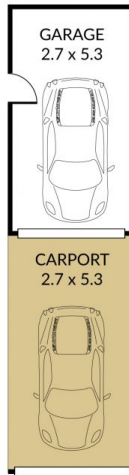
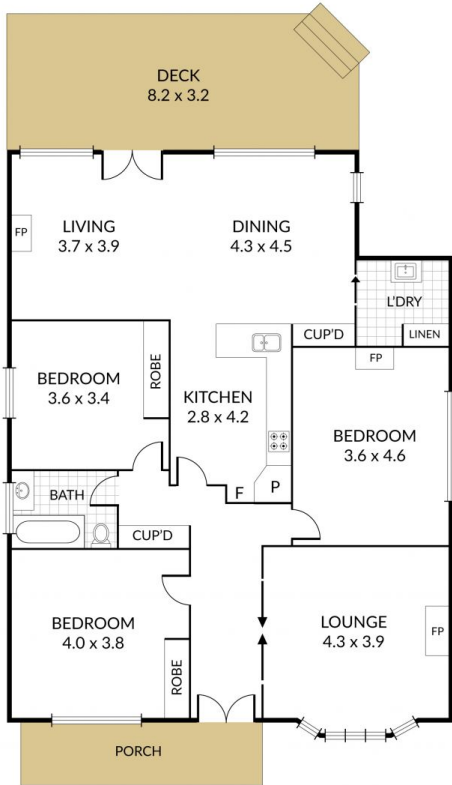
Sarah Hanley
0429579677

Internal 152m² External 440m² Land Size 592m²

726 Tress Street, Mount Pleasant



3 x 1 x 2 x



NOTE: Every precaution has been taken to verify the accuracy of the above details. However, prospective purchasers are advised to make their own enquiries.