



### 7 Pontiac Drive Smythes Creek VIC

4 2 2

Welcome to 7 Pontiac Drive, Smythes Creek. A near new home packed with features and space for the whole family and built by renowned Ballarat Builder, Oasis Building Group. The home features 4 bedrooms 3 with WIRs and remainder with BIR. There are 3 separate living areas as well as a built-in study nook. You will love the luxury vinyl flooring and 2550mm ceilings. The King size Master bedroom includes a striking ensuite with spacious shower, double vanity and separate WC. The sleek, modern kitchen with quality appliances, stone bench tops, dishwasher, WIP, soft closing draws and abundance of storage is a delight. The kitchen overlooks a generous light-filled living space. The large family bathroom complete with bath, shower, and separate WC is perfectly placed for ease of access. There is a laundry with walk in linen closet and direct access outside. A ...

**Building Size** : 28 sqm

**Land Size** : 512 sqm

**View** : <https://www.ballaratrealestate.com.au/sale/vic/ballarat-western-district/smythes-creek/residential/house/7270821>



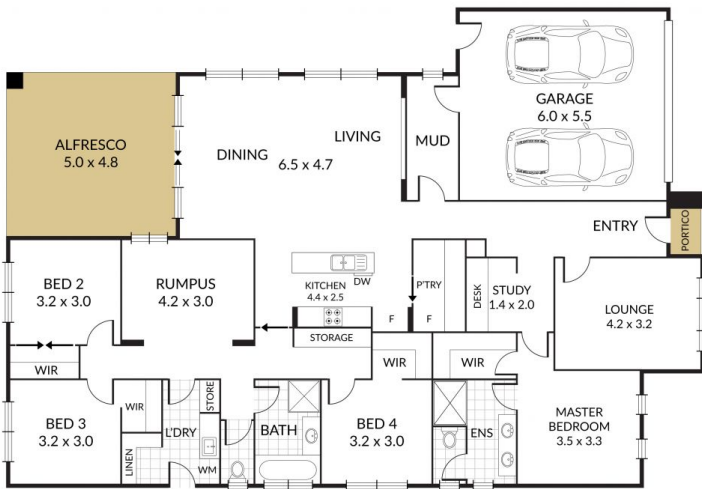
**Tash Guinea**  
03 53312233  
0439 831 058

Internal 222m<sup>2</sup> External 290m<sup>2</sup> Total 512m<sup>2</sup>

7 Pontiac Drive, **Smythes Creek**



4 x 2 x 2 x



NOTE: Every precaution has been taken to verify the accuracy of the above details. However, prospective purchasers are advised to make their own enquiries.