



219 Shire Avenue Mount Helen VIC

4 2 2

BOOK YOUR INSPECTION ONLINE 24/7 Click "Book an Inspection Time" to select a time that is suitable for you. Alternatively, go to our website ballaratrealestate.com.au and press the BOOK INSPECTION button to register for a time that suits you.

Land Size : 953 sqm
View : <https://www.ballaratrealestate.com.au/lease/vic/ballarat-western-district/mount-helen/residential/house/7349406>

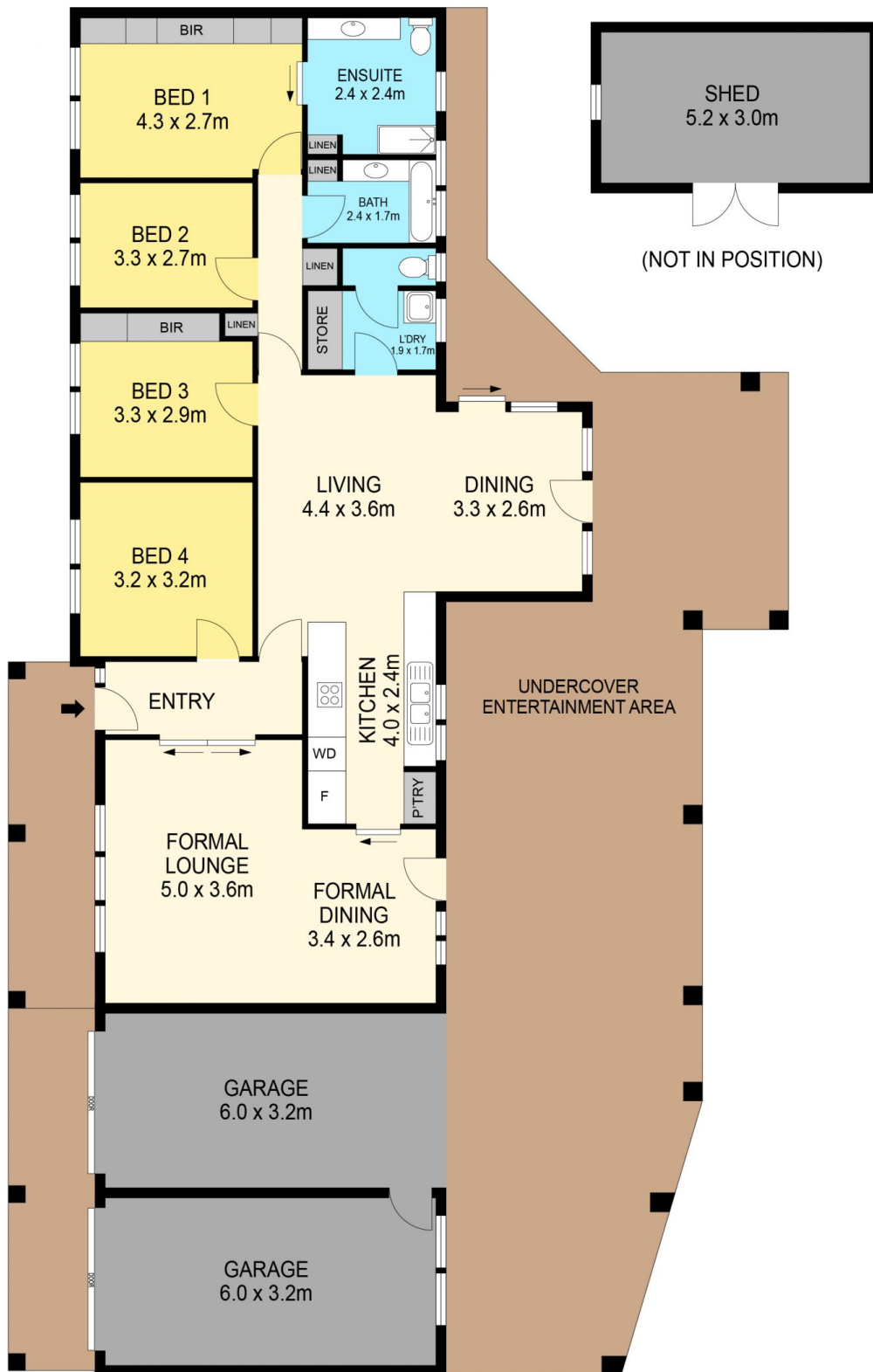
Positioned in the leafy setting of Mount Helen sits this well maintained brick home. Internally, this home features four bedrooms two of which have built in robes and the master with an ensuite. The formal lounge is positioned at the front of the home and looks out onto the beautiful front garden whilst enjoying plenty of natural light. The second living space is part of an open plan kitchen and meals area that makes up the centerpiece of the home. The kitchen has been updated with top quality fixtures and fittings.



Reynaldo Rilen
03 53312233



David Newcombe
5331 2233



DISCLAIMER

PLANS SHOWN ARE FOR MARKETING PURPOSES ONLY. ALL DIMENSIONS ARE APPROXIMATE AND NOT TO SCALE. THEY ARE SUBJECT TO ERRORS AND INACCURACIES AND NO LIABILITY WILL BE ACCEPTED. INTERESTED PARTIES SHOULD MAKE THEIR OWN INQUIRIES.

Ballarat
Real Estate

