



**2 Elizabeth Street Wendouree VIC**

3 1 2

**BOOK YOUR INSPECTION ONLINE 24/7**

Click "Book an Inspection Time" to select a time that is suitable for you.

Alternatively, go to our website [ballaratrealestate.com.au](http://ballaratrealestate.com.au) and press the **BOOK INSPECTION** button to register for a time that suits you.

**Land Size** : 586 sqm

**View** : <https://www.ballaratrealestate.com.au/lease/vic/ballarat-western-district/wendouree/residential/house/7416479>

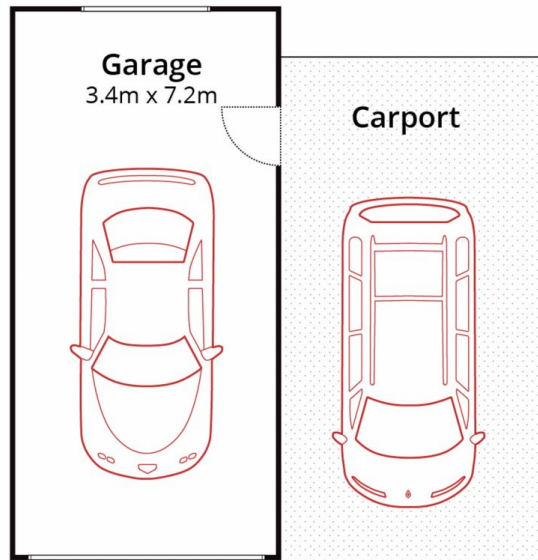
This stunning brick veneer home is situated perfectly in the well-regarded suburb of Wendouree. Only minutes from Ballarat Grammar, Stockland Wendouree, shops, supermarkets, sporting facilities and Lake Wendouree. The home comprises of three well sized bedrooms, all with built in robes. the Bathroom has a separate toilet. The sizable windows throughout make it easy for natural light to fill the entire home. The generously sized living room flows into



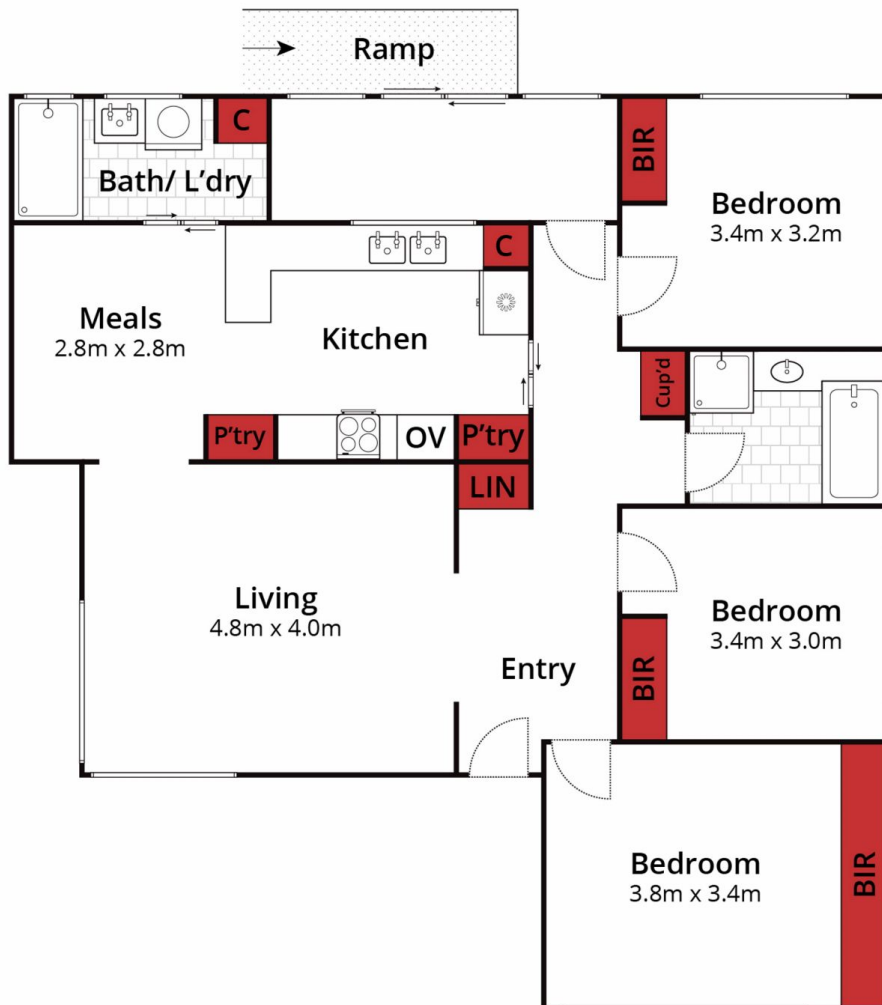
**Reynaldo Rilen**  
03 53312233



**Matt Allen**  
03 53312233



(Not In Position)



Approx House Area 113m<sup>2</sup>  
Approx Land Area 586m<sup>2</sup>



Whilst [bwrn.com.au](http://bwrn.com.au) has made every attempt to ensure the accuracy of the floor plan contained here, measurements are approximate and no responsibility is taken for any error, omission, or mis-statement. This plan is for illustrative purposes only.

**2 Elizabeth Street, Wendouree**

