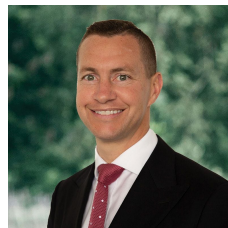


### 16 Anneke Way Winter Valley VIC

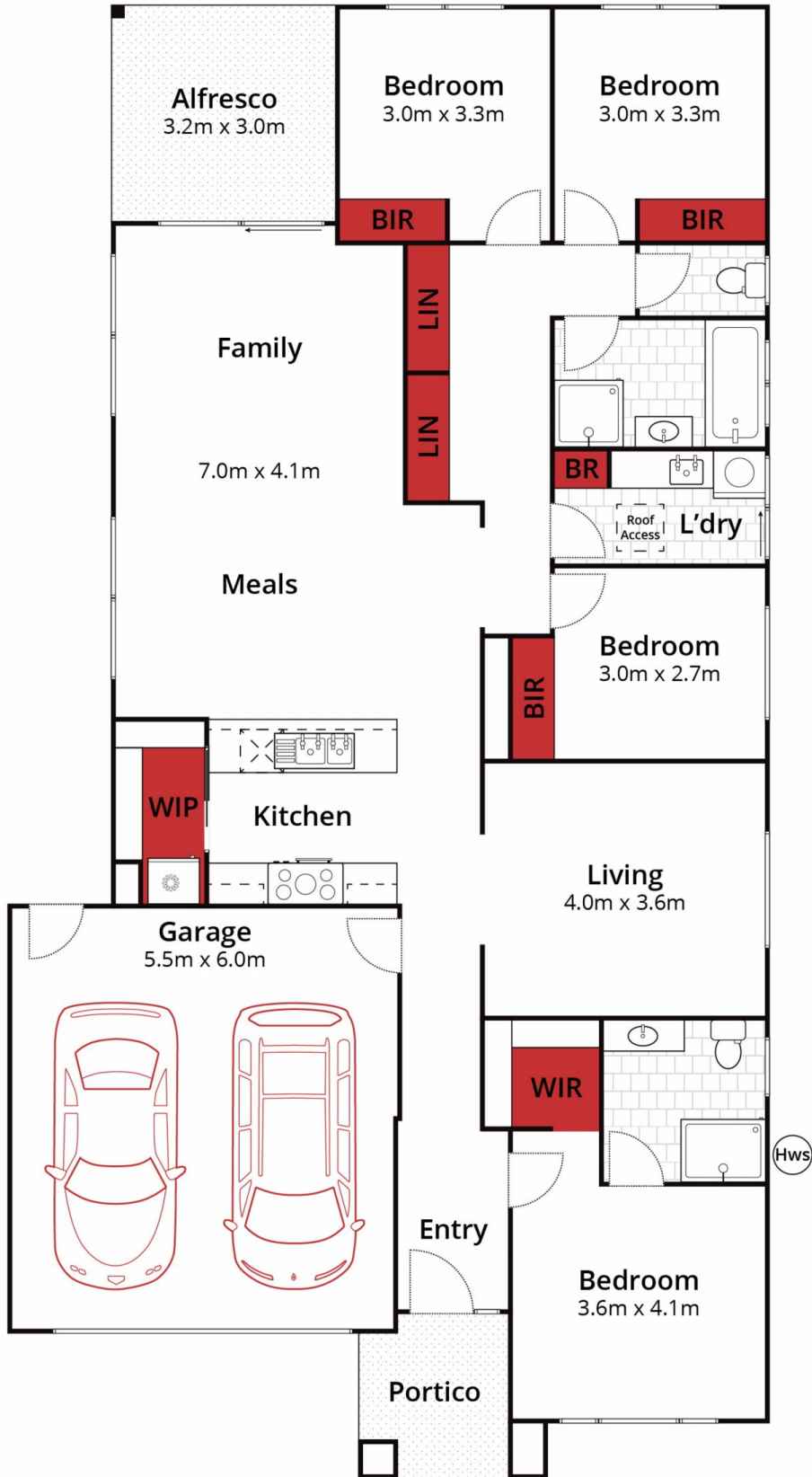
4 2 2

This is an amazing opportunity to purchase a modern family home in the popular growth suburb of Winter Valley. Located within walking distance to Delacombe Town Centre, Schools and parklands/ playgrounds, McDonalds, Service Stations, Bunnings Warehouse and Showbiz Cinemas this sensational near new four-bedroom, two-bathroom home, is sure to impress. The property boasts heating and cooling along with undercover alfresco and a good size yard. Two separate living areas, walk in pantry and a double lock up garage make this home, one to inspect. Contact Damian Larkin today on 0417 088 755 to avoid missing out.

**Price** : \$ 575,000  
**Land Size** : 490 sqm  
**View** : <https://www.ballaratrealestate.com.au/sale/vic/ballarat-western-district/winter-valley/residential/house/7430376>



**Damian Larkin**  
03 53312233  
0417 088 755



Approx House Area 180m<sup>2</sup>  
 Approx Land Area 490m<sup>2</sup>



Whilst [bwrn.com.au](http://bwrn.com.au) has made every attempt to ensure the accuracy of the floor plan contained here, measurements are approximate and no responsibility is taken for any error, omission, or mis-statement. This plan is for illustrative purposes only.

**16 Anneke Way, Delacombe**

Ballarat  
Real Estate

