



3 Chapel Cross Court Winter Valley VIC

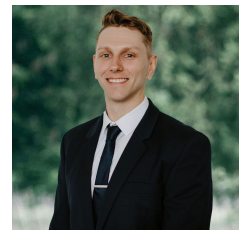
4 2 2

We are pleased to present this quality family home nestled in Kensington Estate on a generous 842m² allotment. Only a short distance to all of the Delacombe Town Centre (DTC) amenities and close proximity to surrounding schools, making this a desirable location to raise a family. This charming brick veneer home offers a double lock up garage with roller door access to the backyard. The home comprises of three bedrooms with a study that can be transformed into a fourth with ease. The master with WIR and ensuite features heated towel rail, vanity, shower and own toilet. BIR's in the remaining rear bedrooms share an updated bathroom. The spacious open plan living with a modest tiled kitchen gives smooth access to north facing the outdoor entertainment area. The property presents a substantial backyard hosting two garden sheds, water tank, a cubby house for the ...

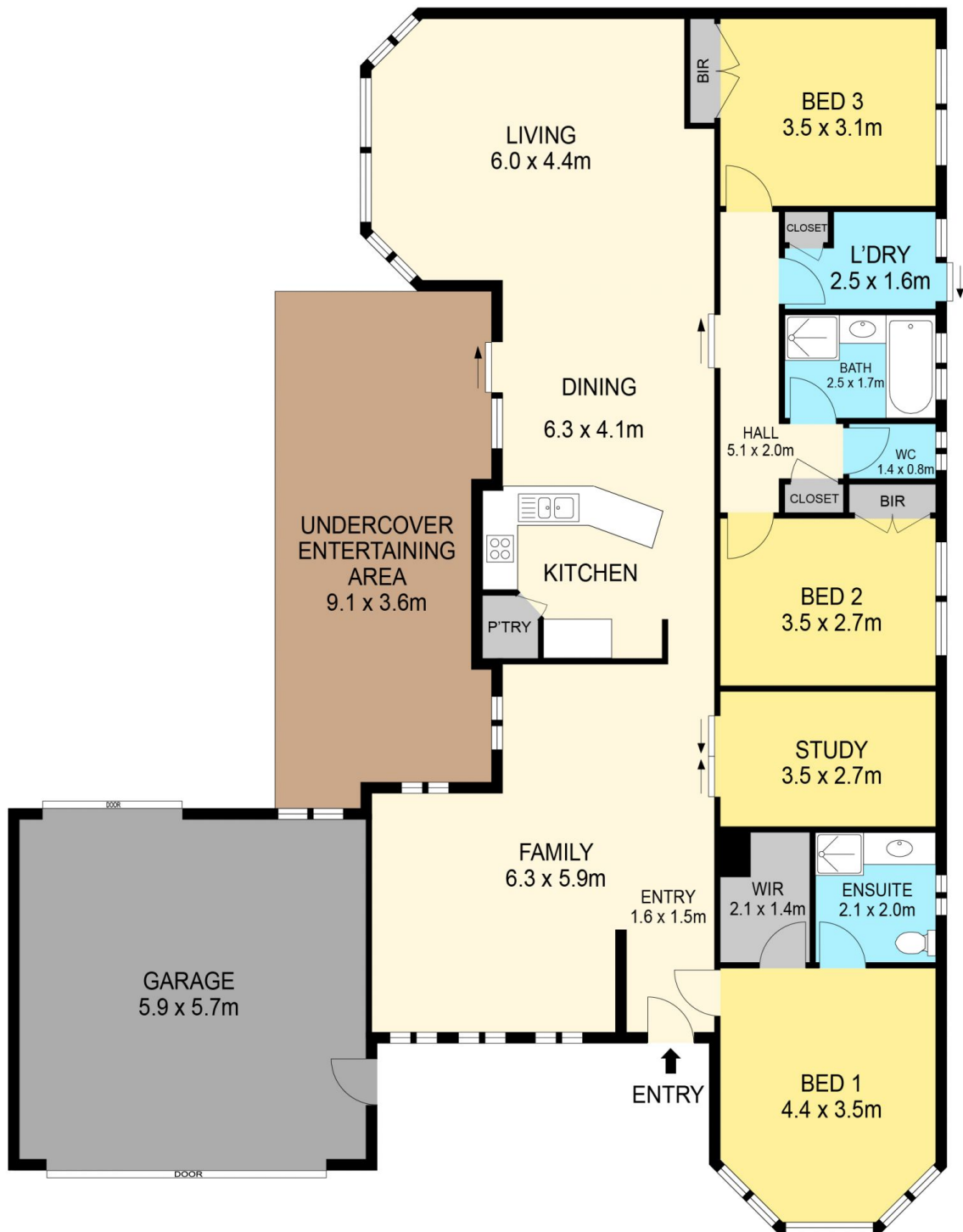
Price : \$ 568,000
Land Size : 842 sqm
View : <https://www.ballaratrealestate.com.au/sale/vic/ballarat-western-district/winter-valley/residential/house/7435807>



Lachlan Sylvia
03 53312233
0458 068 234



Chris Just
5331 2233
0438 235 293



DISCLAIMER

PLANS SHOWN ARE FOR MARKETING PURPOSES ONLY. ALL DIMENSIONS ARE APPROXIMATE AND NOT TO SCALE. THEY ARE SUBJECT TO ERRORS AND INACCURACIES AND NO LIABILITY WILL BE ACCEPTED. INTERESTED PARTIES SHOULD MAKE THEIR OWN INQUIRES.

Ballarat
Real Estate

