

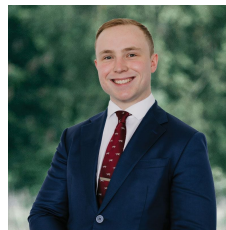


6 Leerama Court Black Hill VIC

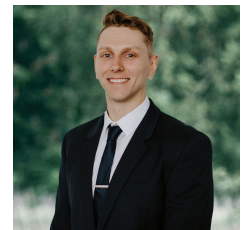
4 2 2

Positioned in popular Black Hill is this beautiful home on an elevated 587m2 (approx) allotment. Located close to the CBD and within walking distance to Black Hill Primary, local pool, Black Hill Reserve and Ballarat's most popular walking trails makes this a sort after location for a growing family. This incredibly well maintained home has been through a recent upgrade giving the early 90's built home a fresh new look. The home offers three bedrooms with a fourth room acting as an office that can be converted to a bedroom with ease. The front positioned master suite has direct access to both WIR and ensuite with WC. The remaining two bedrooms are at the rear of the home providing plenty of room, both including mirrored BIR's. The family bathroom features shower, vanity and bath. Two large living areas boasting an open plan kitchen and dining area provides ...

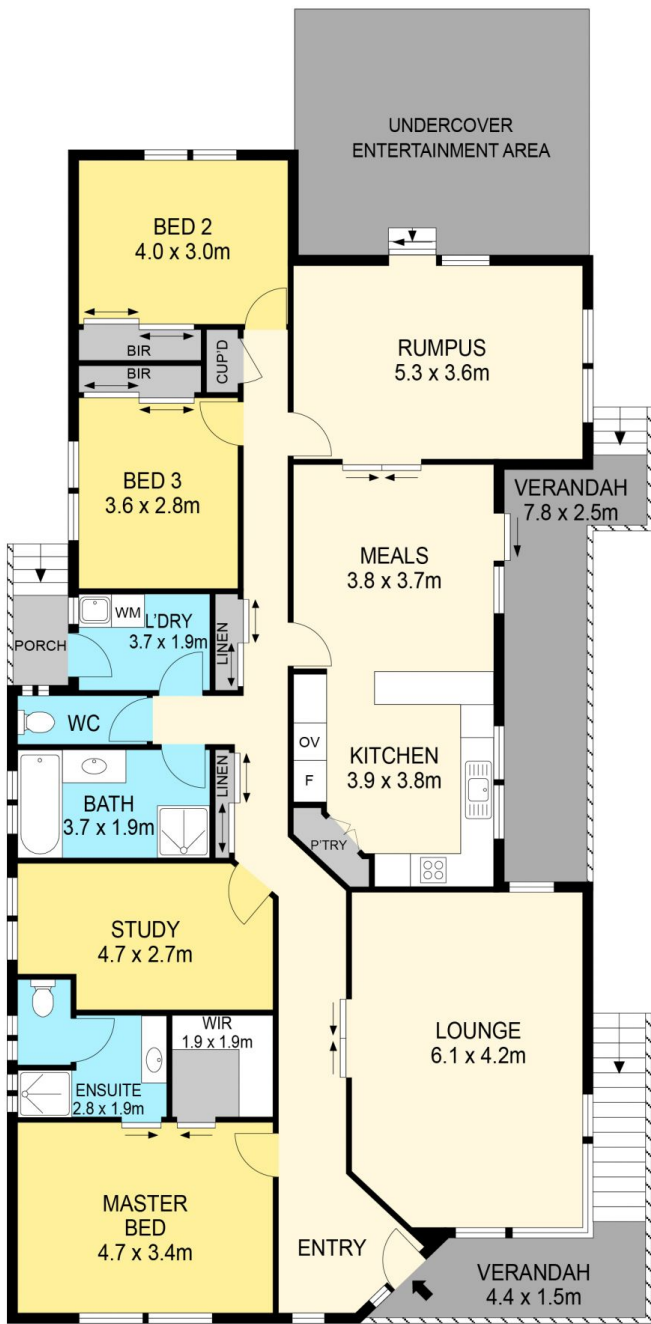
Price : \$ 670,000
Land Size : 587 sqm
View : <https://www.ballaratrealestate.com.au/sale/vic/ballarat-western-district/black-hill/residential/house/7441584>



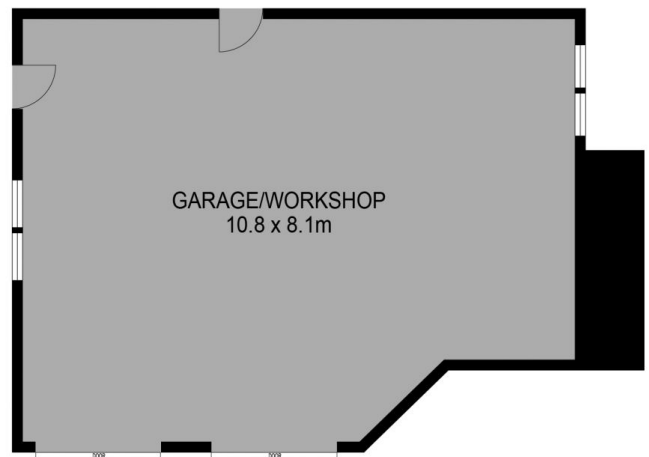
Lachlan Sylvia
 03 53312233
 0458 068 234



Chris Just
 5331 2233
 0438 235 293



GROUND FLOOR



LOWER FLOOR

DISCLAIMER

PLANS SHOWN ARE FOR MARKETING PURPOSES ONLY. ALL DIMENSIONS ARE APPROXIMATE AND NOT TO SCALE. THEY ARE SUBJECT TO ERRORS AND INACCURACIES AND NO LIABILITY WILL BE ACCEPTED. INTERESTED PARTIES SHOULD MAKE THEIR OWN INQUIRIES.

Ballarat
Real Estate

