



15 Holstein Close Delacombe VIC

4 2 3

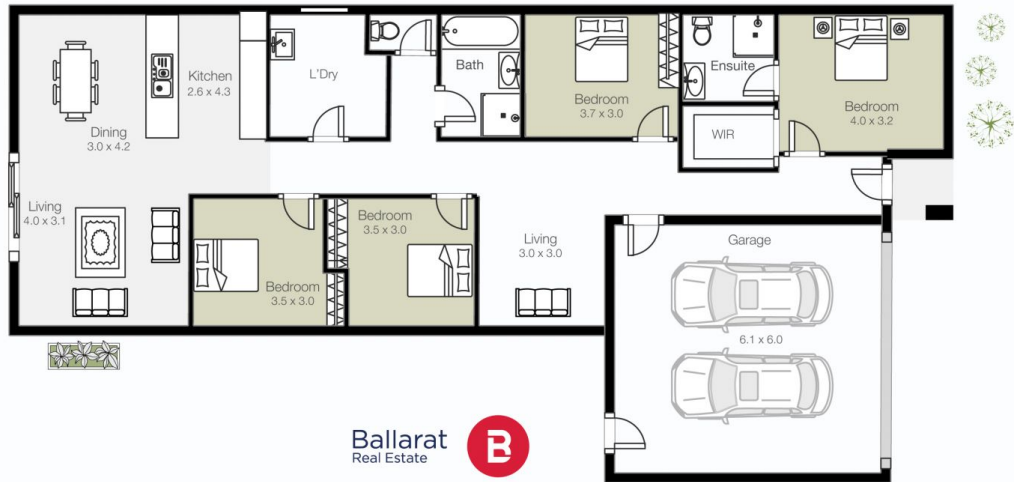
Positioned in the heart of popular Delacombe, this property sits on a generous allotment and is close to schools, transport and shops. A well-kept brick veneer home offering four good sized bedrooms with built in robes; the master with a walk-in robe and ensuite that is sure to please. The two north facing light filled living spaces provide flexibility of living while the main bathroom (with separate toilet) is well equipped. The open plan kitchen has stone benchtops, a large fridge space and is adjoined by a spacious dining and living area. Other features include gas central heating, new carpet throughout, a large double garage and laundry complete this well thought out home. Outside, the yard is spacious with scope to make it your own offering plenty of room for the family and entertaining. The block has side access and space enough for your trailer, boat ...

Price : \$ 525,000
Land Size : 617 sqm
View : <https://www.ballaratrealestate.com.au/sale/vic/ballarat-western-district/delacombe/residential/house/7517562>



Richard Gent
5331 2233
0427 536 062

15 Holstein Close **Delacombe**



Richard Gent 0427 536 062

This plan is for illustrative purposes only, floor plan proportions and scale are approximate. Plan prepared by PLP Ballarat © 2023 for Ballarat Real Estate.