



9 Montadale Court Alfredton VIC

5 2 6

This is a stunning and spacious modern family home located in Alfredton. The property boasts a large land size of approximately 1132m² with a wide frontage and public reserve located behind the property. The home is situated in the highly sought-after Ballarat High School zone and is within walking distance to park and playground facilities, as well as cycling and walking trails. The property is also close to Alfredton and St Thomas More primary schools.

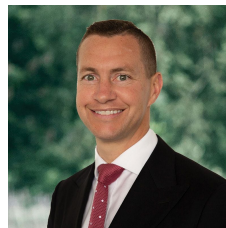
The home itself is beautifully designed with attention to detail evident in every aspect. The entrance to the home is welcoming and leads to a formal living room and a 5th bedroom or home office. The kitchen is stunning with top-of-the-line appliances, stone bench tops, and a large walk-in butler's pantry.

The open plan living, kitchen, and meals area leads out onto an impressive decked alfresco area, perfect ...

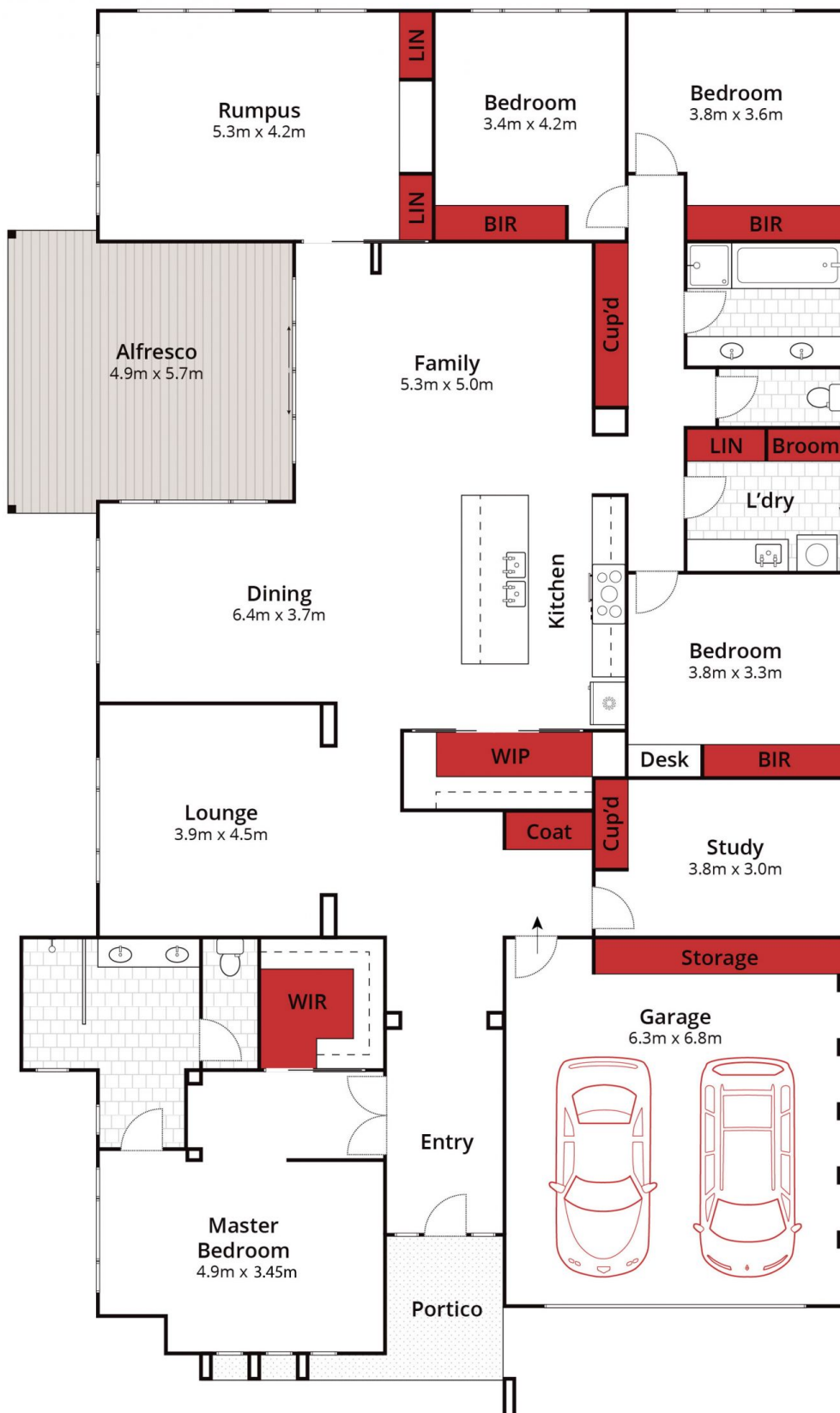
Building Size : 360 sqm

Land Size : 1132 sqm

View : <https://www.ballaratrealestate.com.au/sale/vic/ballarat-western-district/alfredton/residential/house/7544866>



Damian Larkin
03 53312233
0417 088 755



Approx House Area 322m²

Approx Land Area 1131m²



Whilst bwm.com.au has made every attempt to ensure the accuracy of the floor plan contained here, measurements are approximate and no responsibility is taken for any error, omission, or mis-statement. This plan is for illustrative purposes only.

9 Montadale Court, Alfredton

Ballarat
Real Estate

