



23 Wensleydale Drive Alfredton VIC

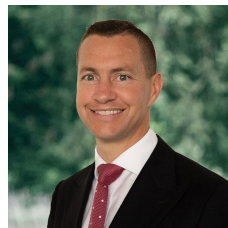
4 2 2

Experience the epitome of luxury in this stunning new family home situated in prestigious Alfredton. With its prime location across from Kensington Creek, walking tracks, and close proximity to schools, Lucas shopping centre, and the renowned Ballarat Golf Club, this property offers an extraordinary lifestyle.

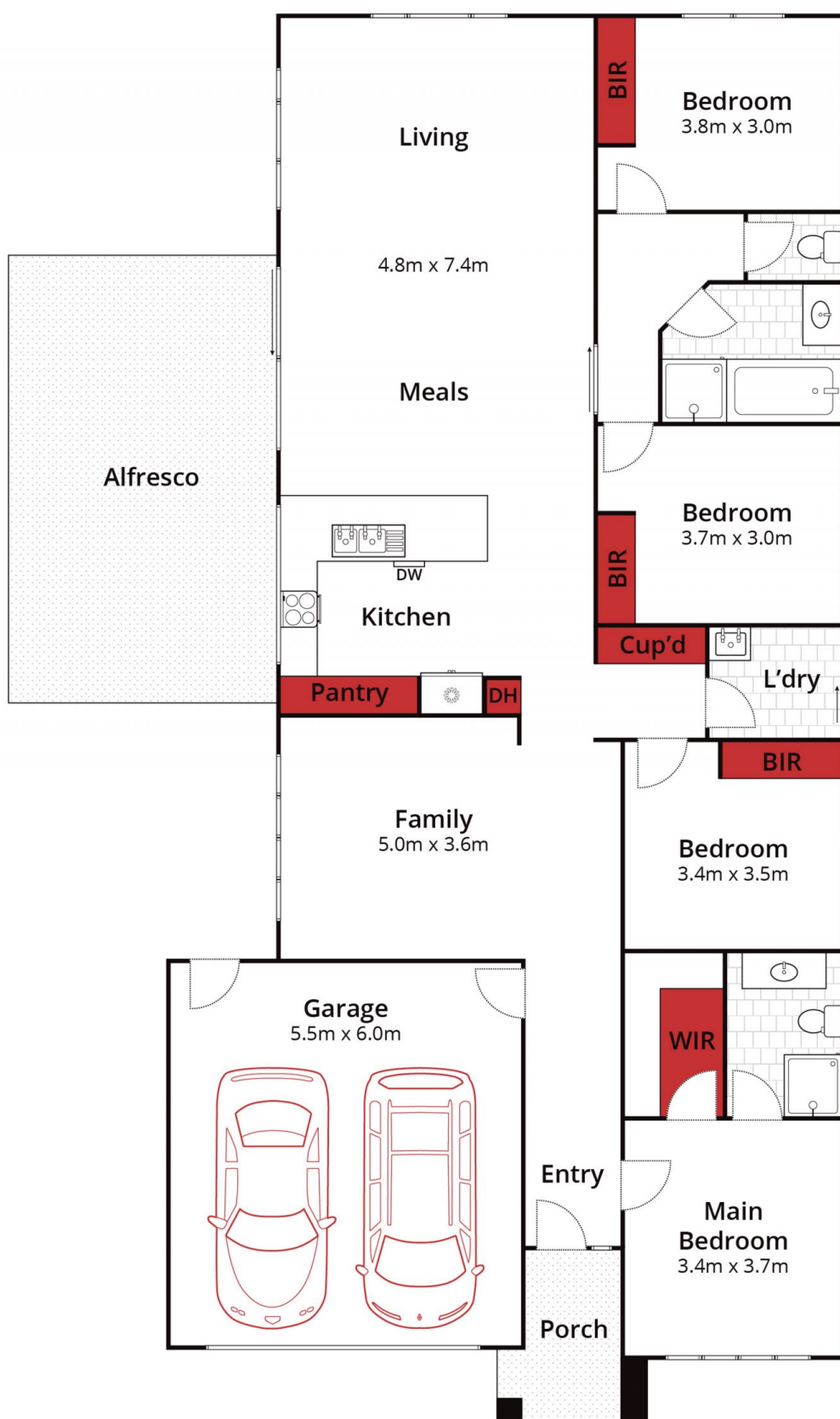
Step through the grand entrance into a world of elegance. The formal living area sets the stage, leading to an open-plan kitchen, living, and dining space that seamlessly flows to a beautiful undercover alfresco area. The modern kitchen boasts stone benchtops, stainless steel appliances, and a pantry.

The king-sized master bedroom features a walk-in robe and ensuite, while three additional queen-sized bedrooms

Price : \$ 725,000
Land Size : 746 sqm
View : <https://www.ballaratrealestate.com.au/sale/vic/ballarat-western-district/alfredton/residential/house/7606067>



Damian Larkin
03 53312233
0417 088 755



Approx House Area 168m²

Approx Land Area 746m²



Whilst bwm.com.au has made every attempt to ensure the accuracy of the floor plan contained here, measurements are approximate and no responsibility is taken for any error, omission, or mis-statement. This plan is for illustrative purposes only.

23 Wensleydale Drive, Alfredton

Ballarat
Real Estate

