



11 Whitelaw Avenue Delacombe VIC

3 1 3

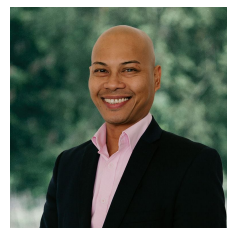
BOOK YOUR INSPECTION ONLINE 24/7

Click "Book an Inspection Time" to select a time that is suitable for you. Alternatively, go to our website [ballaratrealestate.com.au](https://www.ballaratrealestate.com.au) and press the BOOK INSPECTION button to register for a time that suits you.

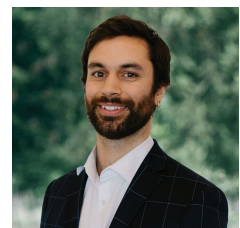
Land Size : 655 sqm

View : <https://www.ballaratrealestate.com.au/lease/vic/ballarat-western-district/delacombe/residential/house/7608939>

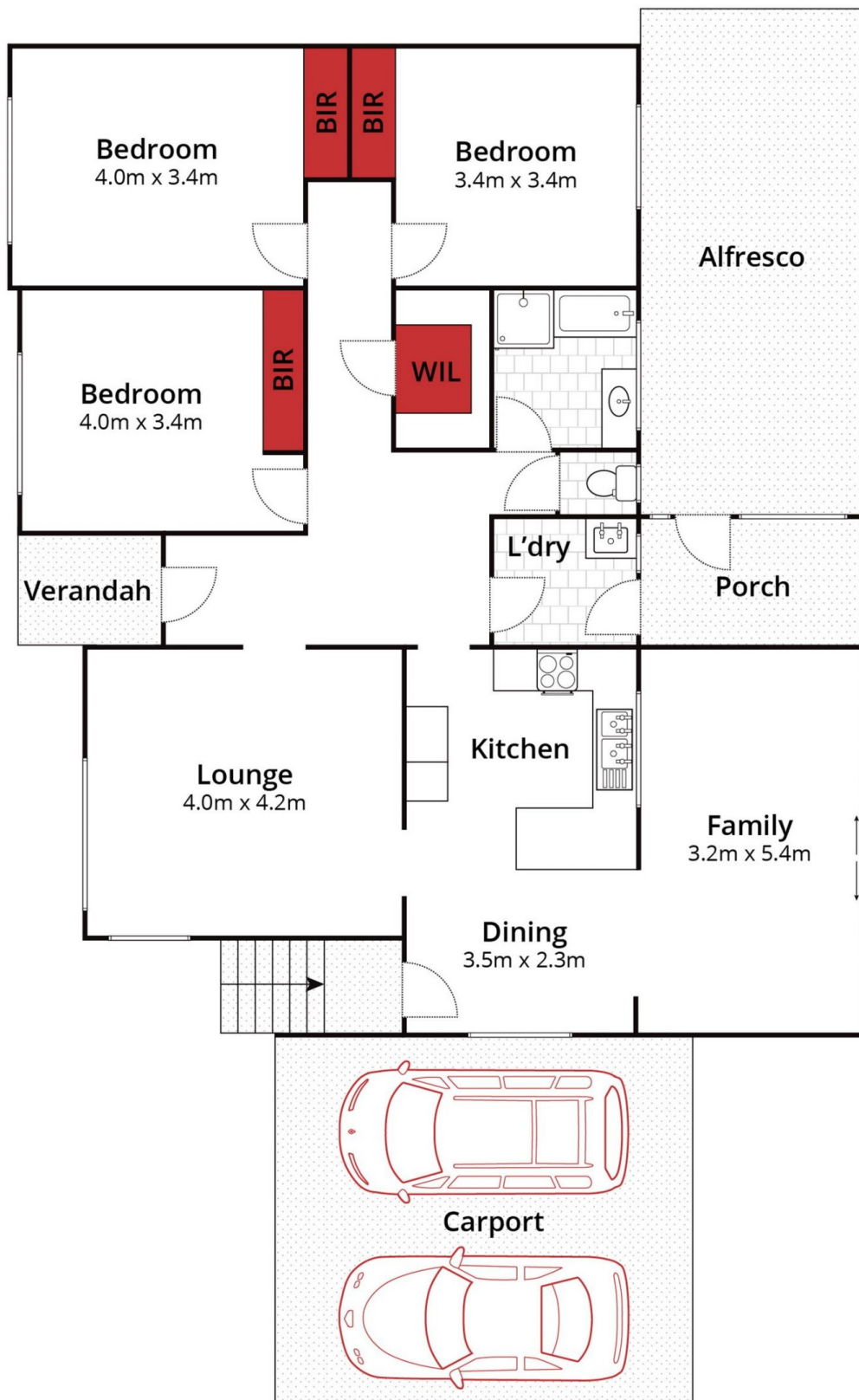
Set on approximately 655m², this well presented and thoughtfully cared for brick veneer home will impress any renters/tenants. Comprising three Bedrooms with robes, and a central family bathroom. This home boasts two separate living spaces, including open plan kitchen/meals/living space with reverse cycle split system and central heating. This property accommodates a large single car garage / shed / workshop complete with a wood heater, double lock up garage and side access. The yard



Reynaldo Rilen
03 53312233



Ky Taylor



Approx House Area 126m²

Approx Land Area 655m²



Whilst bwm.com.au has made every attempt to ensure the accuracy of the floor plan contained here, measurements are approximate and no responsibility is taken for any error, omission, or mis-statement. This plan is for illustrative purposes only.

11 Whitelaw Avenue, Delacombe

Ballarat
Real Estate

