



119 Alfredton Drive Alfredton VIC

4 2 4

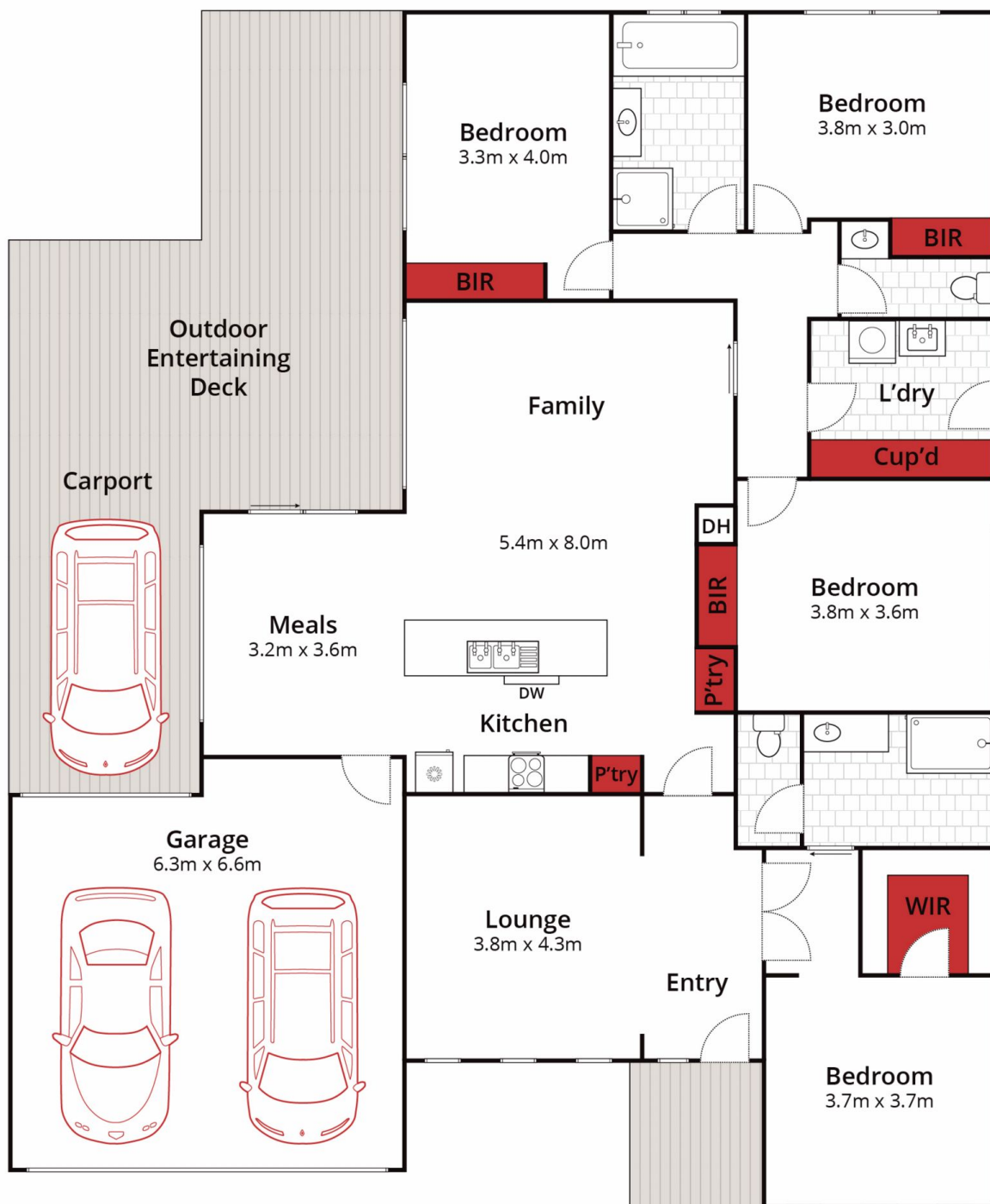
BOOK YOUR INSPECTION ONLINE 24/7 Click "Book an Inspection Time" to select a time that is suitable for you. Alternatively, go to our website [ballaratrealestate.com.au](https://www.ballaratrealestate.com.au) and press the BOOK INSPECTION button to register for a time that suits you.

Land Size : 768 sqm
View : <https://www.ballaratrealestate.com.au/lease/vic/ballarat-western-district/alfredton/residential/house/7706913>

Ideally located behind the Alfredton primary school and close to parks, shops and sporting grounds is this spacious family home. There are features everywhere you look here including two living zones, four generous bedrooms, master with walk-in robe and ensuite, gas central heating and evaporative cooling throughout. Outside is just as impressive with a generous undercover alfresco area, double lock up garage with direct internal access, single carport and an extra shed at the rear with power. This quality family home is a rare find with so many sought after



Jackson Leech
5331 2233



Approx House Area 219m²
Approx Land Area 768m²



Whilst bwrn.com.au has made every attempt to ensure the accuracy of the floor plan contained here, measurements are approximate and no responsibility is taken for any error, omission, or mis-statement. This plan is for illustrative purposes only.

119 Alfredton Drive, Alfredton

