



9 Wade Place Lucas VIC

4 2 2

BOOK YOUR INSPECTION ONLINE 24/7 Click "Book an Inspection Time" to select a time that is suitable for you. Alternatively, go to our website ballaratrealestate.com.au and press the BOOK INSPECTION button to register for a time that suits you.

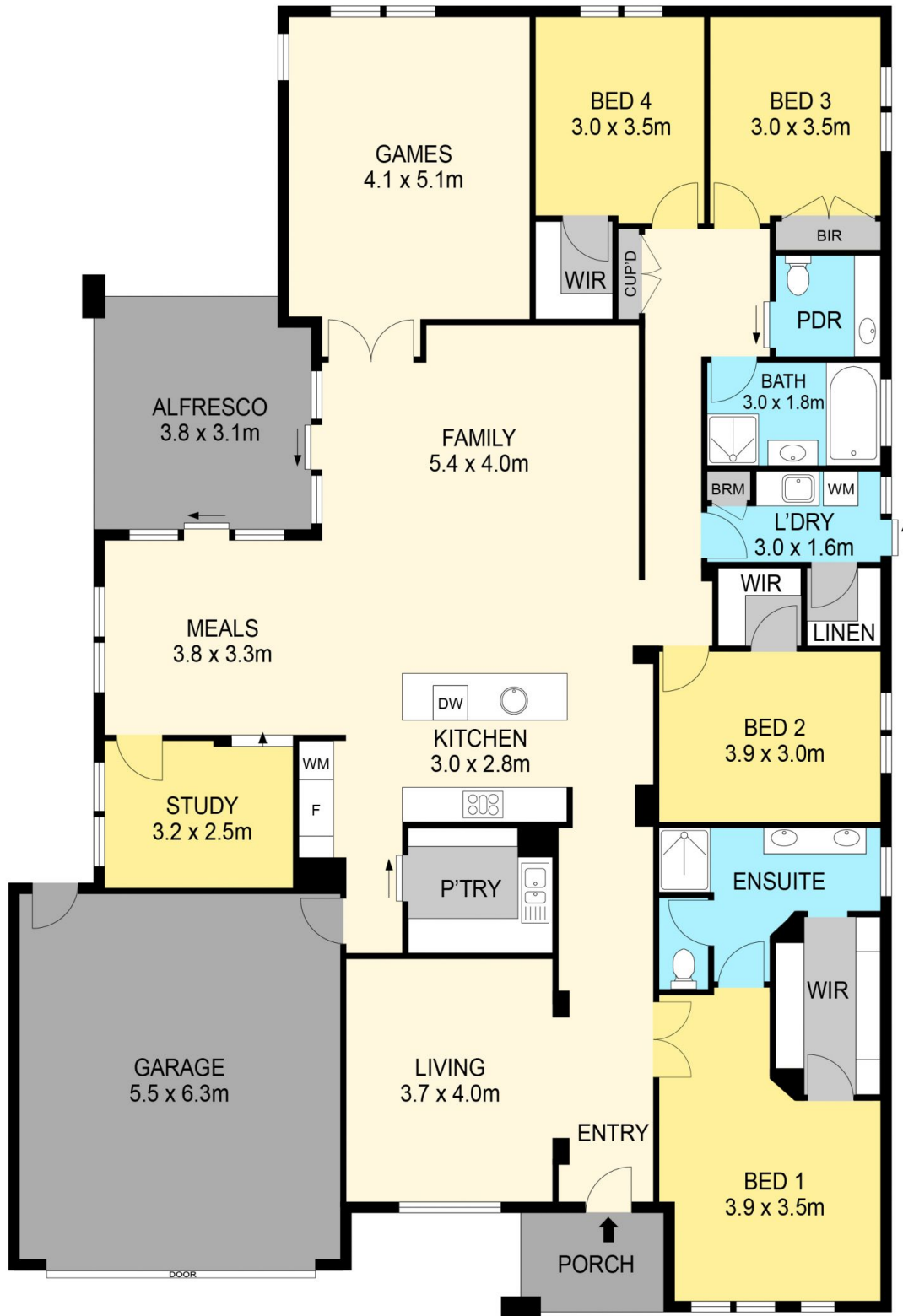
Land Size : 611 sqm

View : <https://www.ballaratrealestate.com.au/lease/vic/ballarat-western-district/lucas/residential/house/7830004>

Nestled within the thriving Lucas region, discover this expansive family home. Mere moments away from the offerings of the Lucas Town Centre, daycare and primary schools and within the Ballarat High School catchment zone, this residence is perfectly positioned for a growing family. Your journey begins with an awe inspiring sight, the north facing brick veneer exterior adorned with a meticulously landscaped front yard with exposed aggregate concrete driveway and a pathway which leads to the grand entrance, welcoming you with open arms. Step inside to



Tiarra Lockwood
03 53312233



DISCLAIMER

PLANS SHOWN ARE FOR MARKETING PURPOSES ONLY. ALL DIMENSIONS ARE APPROXIMATE AND NOT TO SCALE. THEY ARE SUBJECT TO ERRORS AND INACCURACIES AND NO LIABILITY WILL BE ACCEPTED. INTERESTED PARTIES SHOULD MAKE THEIR OWN INQUIRIES.

Ballarat
Real Estate

