



40 Dante Crescent Bonshaw VIC

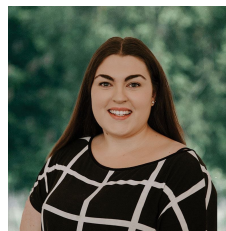
4 2 2

This large brand new home is ready for you to move in to! Close to schools and Delacombe town center this property will not disappoint!

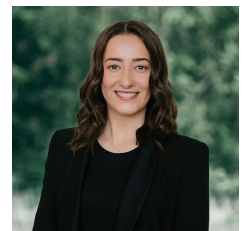
The large entrance hallway to the property is a stand out feature upon entering the home. Leading to a spacious living areas perfect for a kids play room or as a functional second lounge.

The large open plan kitchen, dining and living area offers ample natural light and space for entertaining and daily living. The kitchen features generous bench space, a large walk in pantry, stainless steel amenities as well as a 900mm gas cooktop and oven. The dining and living area also feature a built in ceiling fan.

View : <https://www.ballaratrealestate.com.au/lease/vic/ballarat-western-district/bonshaw/residential/house/7914651>



Izzy Read
5331 2233



Mikayla Watt
5331 2233