



22 Sligo Street Alfredton VIC

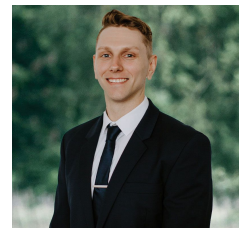
4 2 2

Nestled in the heart of Ballymanus Estate lies this impeccably refurbished modern residence on a comfortable 448m² (approx) plot. Ideally located within the coveted Ballarat High School and Alfredton Primary School zones, this home is perfect for families. You'll enjoy the convenience of nearby Lucas Town Centre and Delacombe Town Centre, as well as scenic parklands right at your doorstep. From the moment you arrive, the home's modern brick veneer design, with rendered accents and a double lock-up garage, sets a welcoming tone. The low-maintenance front yard is just a preview of the easy living this property offers. Inside, the home features four spacious bedrooms. The master suite, situated at the front, includes a walk-in robe and a stylish ensuite with a shower, vanity, and toilet. The remaining three bedrooms, each with built-in robes, share a well-app...

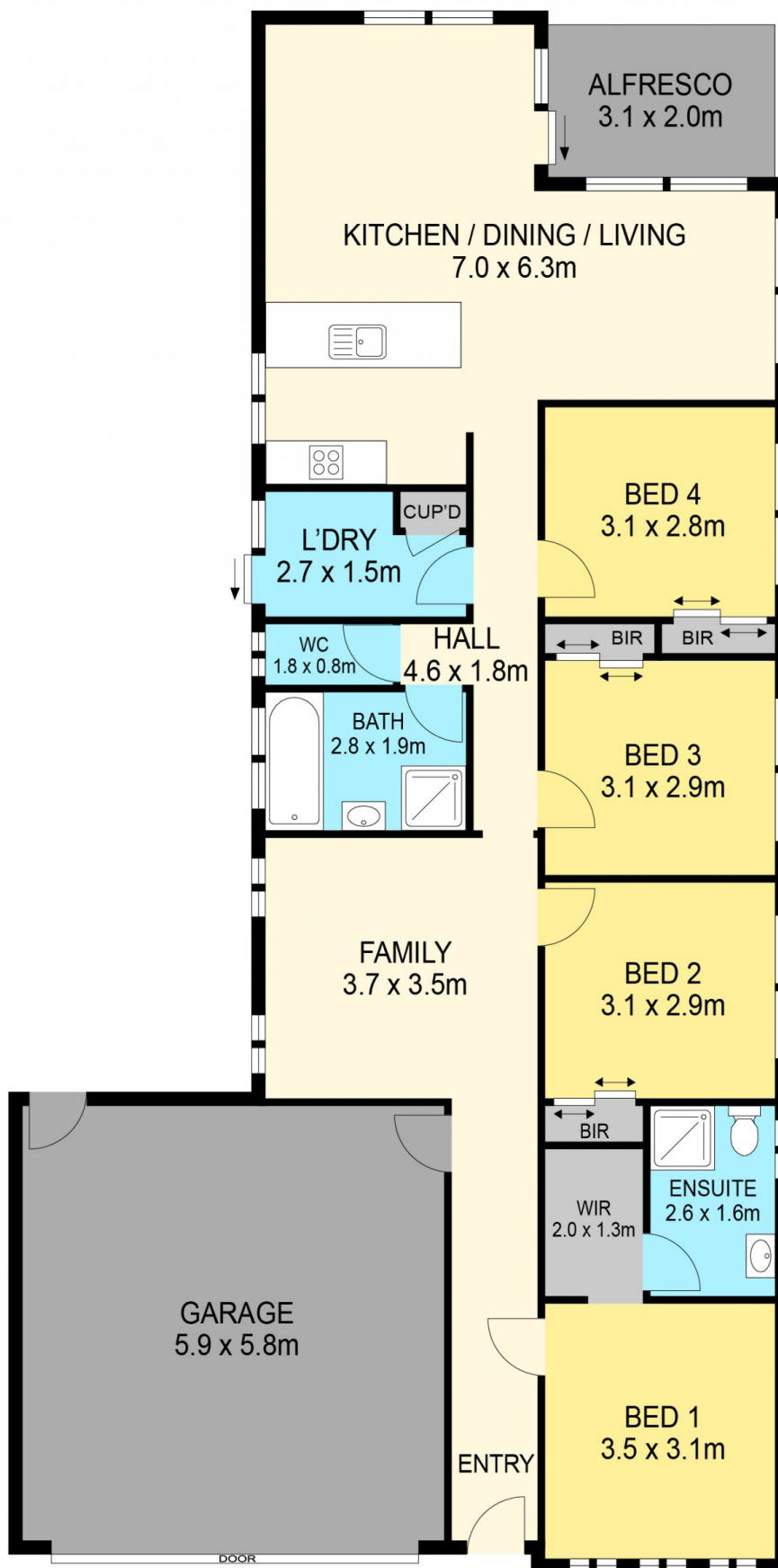
Price : \$500,000 - \$540,000
Land Size : 448 sqm
View : <https://www.ballaratrealestate.com.au/sale/vic/ballarat-western-district/alfredton/residential/house/8030328>



Lachlan Sylvia
03 53312233
0458 068 234



Chris Just
5331 2233
0438 235 293



DISCLAIMER

PLANS SHOWN ARE FOR MARKETING PURPOSES ONLY. ALL DIMENSIONS ARE APPROXIMATE AND NOT TO SCALE. THEY ARE SUBJECT TO ERRORS AND INACCURACIES AND NO LIABILITY WILL BE ACCEPTED. INTERESTED PARTIES SHOULD MAKE THEIR OWN INQUIRES.

Ballarat
Real Estate

