



## 6 Lynrose Close Sebastopol VIC

4 2 2

Nestled in the highly sought-after Sebastopol, this immaculate home showcases stunning, high-quality features throughout. Upon entering, you'll be captivated by the meticulous design. The house offers four spacious bedrooms, including a master with a walk-in robe and ensuite, while the remaining bedrooms feature built-in robes. The main living area connects seamlessly to the large, modern kitchen and dining area, equipped with stainless steel appliances and ample cupboard space. Additional comforts include gas central heating and split system cooling. The outdoor space continues to impress with a vast undercover alfresco area, a yard perfect for children's play, side access, and a double lock-up garage. This exceptional property is loaded with all the desired amenities. Don't miss out-call Blaise Newnham today 0423 175 643 to book your private viewing.

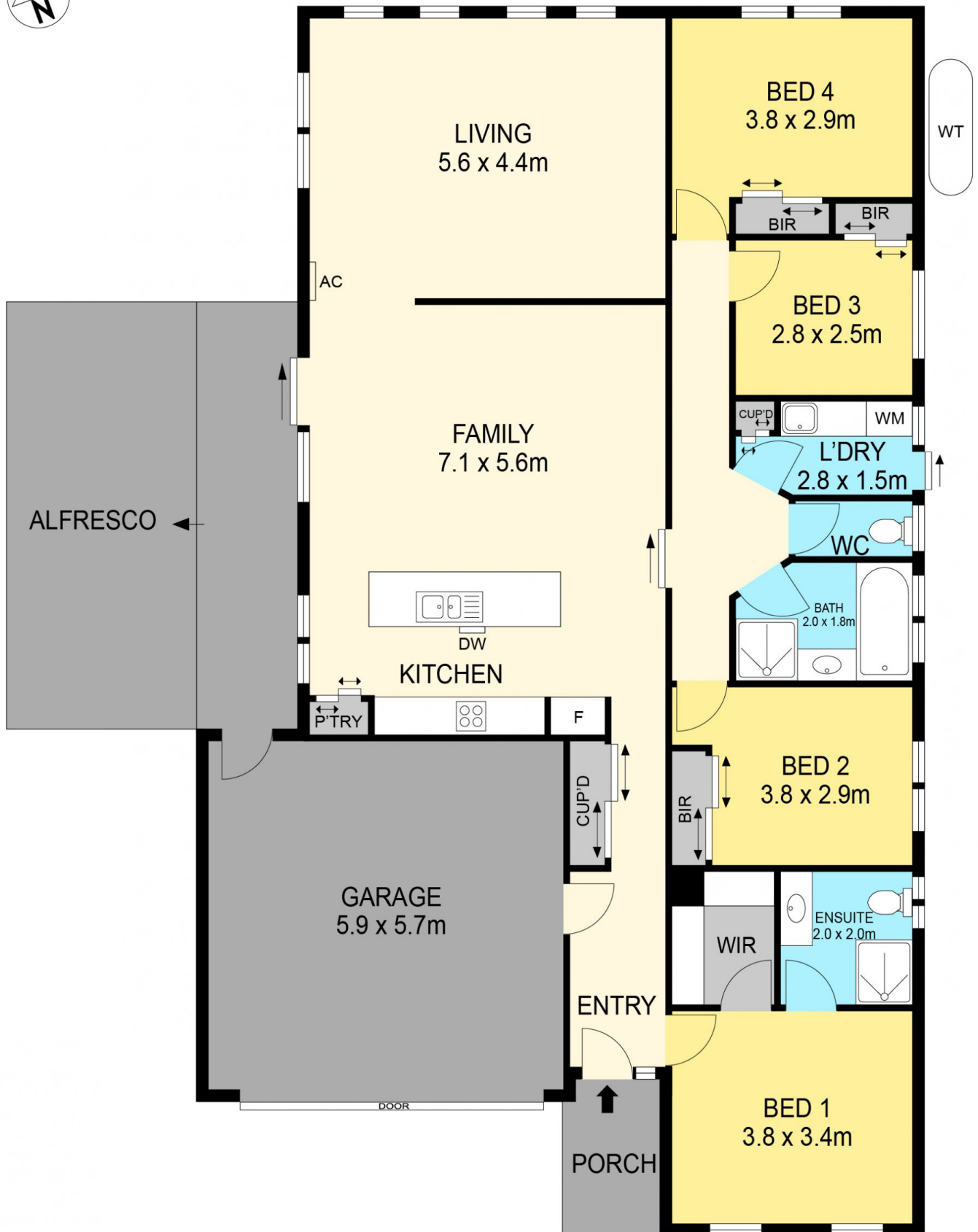
**Price** : \$650,000 - \$700,000  
**Land Size** : 720 sqm  
**View** : <https://www.ballaratrealestate.com.au/sale/vic/ballarat-western-district/sebastopol/residential/house/8032105>



**Blaise Newnham**  
5331 2233  
0423175643



**Josh Horvat**  
5331 2233  
0478 804 929



#### DISCLAIMER

PLANS SHOWN ARE FOR MARKETING PURPOSES ONLY. ALL DIMENSIONS ARE APPROXIMATE AND NOT TO SCALE. THEY ARE SUBJECT TO ERRORS AND INACCURACIES AND NO LIABILITY WILL BE ACCEPTED. INTERESTED PARTIES SHOULD MAKE THEIR OWN INQUIRES.

Ballarat  
Real Estate

