



15 Longley Street Alfredton VIC

4 2 3

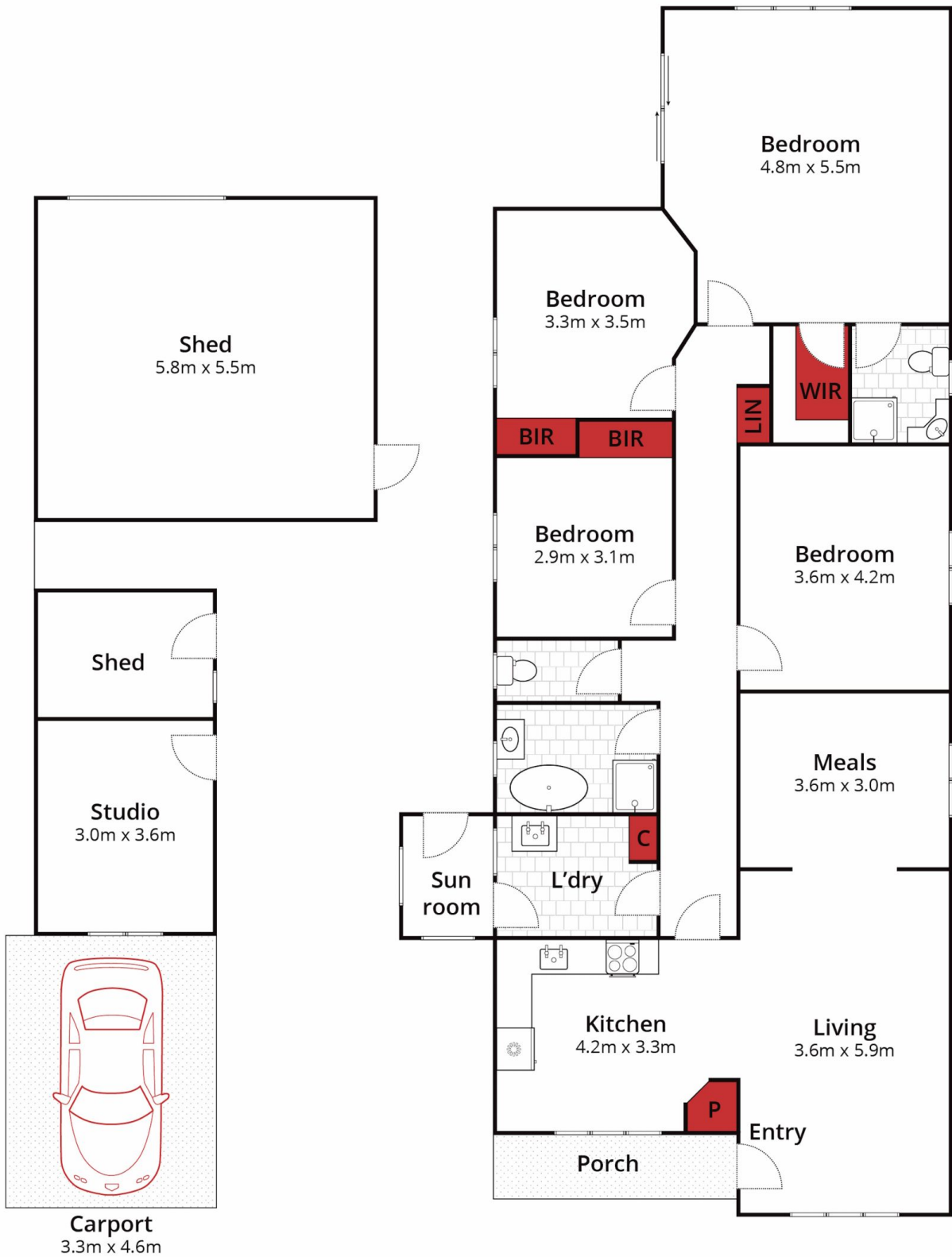
Discover this impressive family home, perfect for both investors and growing families. Situated on a generous 613m2 allotment, this property offers front and rear access for added convenience and flexibility. The heart of the home is the open-plan kitchen, seamlessly connected to the living area and formal dining space, featuring polished timber flooring, gas heating, and an inviting open layout.

The well-appointed kitchen is a chef's dream, equipped with a gas stove, oven, sink, dishwasher, and ample storage. The master bedroom, located at the rear of the home, includes a spacious walk-in robe, a luxurious ensuite with a shower, vanity, and toilet, along with beautiful views of the rear yard. Three additional bedrooms, two with built-in robes, provide plenty of space for the whole family. The family bathroom features a separate bath, shower,

Price : \$ 495,000
Building Size : 162 sqm
Land Size : 613 sqm
View : <https://www.ballaratrealestate.com.au/sale/vic/ballarat-western-district/alfredton/residential/house/8035762>



Alex Stepnell
03 53312233



Approx House Area 151m²

Approx Land Area 613m²



Whilst bwm.com.au has made every attempt to ensure the accuracy of the floor plan contained here, measurements are approximate and no responsibility is taken for any error, omission, or mis-statement. This plan is for illustrative purposes only.

15 Longley Street, Alfredton

Ballarat
Real Estate

