



357 Glenelg Highway Smythes Creek VIC

3 2 2

Experience modern family living in this stylish three-bedroom home located in sought-after Smythes Creek, just moments from DTC Shopping Centre. Inside, you will find a spacious master bedroom with a walk-in robe and light-filled ensuite. Two additional bedrooms offer built-in robes for ample storage. The open-plan kitchen, dining, and living area features stainless steel appliances, including a 900mm gas cooktop and electric oven, complemented by a large walk-in pantry.

Entertaining is effortless with a second lounge area perfect for movie nights or gatherings. The main bathroom boasts a shower, bath, and separate toilet.

Stay comfortable year-round with gas ducted central heating and evaporative cooling throughout. A remote double lock-up garage with internal access adds convenience, while the undercover patio invites outdoor

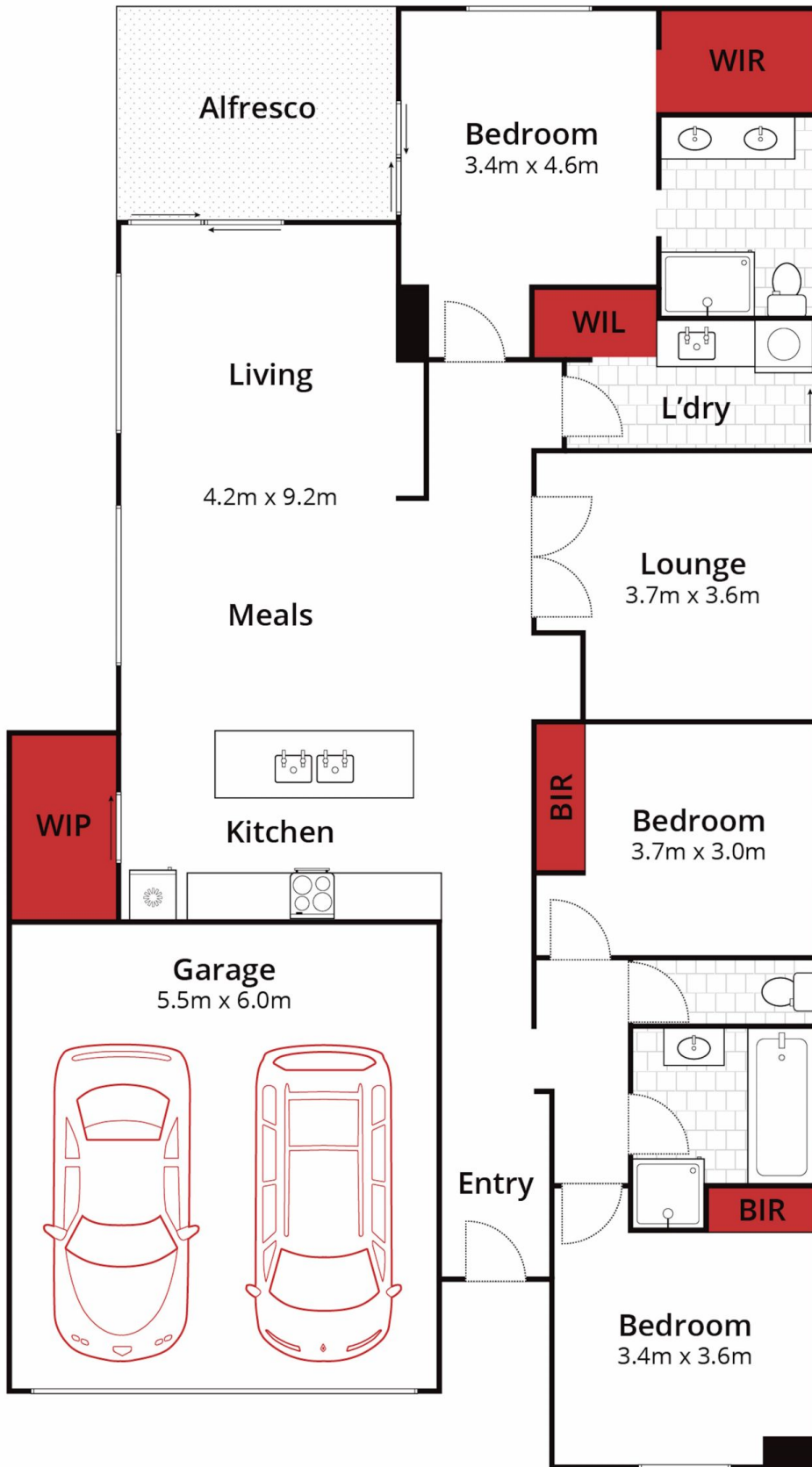
Price : \$ 500,000

Land Size : 448 sqm

View : <https://www.ballaratrealestate.com.au/sale/vic/ballarat-western-district/smythes-creek/residential/house/8035792>



Alex Stepnell
03 53312233
0407373507



Approx House Area 164m²
 Approx Land Area 448m²



Whilst bwrn.com.au has made every attempt to ensure the accuracy of the floor plan contained here, measurements are approximate and no responsibility is taken for any error, omission, or mis-statement. This plan is for illustrative purposes only.

357 Glenelg Highway, Smythes Creek

