



#### 4 Gwenith Avenue Newington VIC

3 2 4

This charming brick home is nestled in one of Ballarat's most sought-after suburbs of Newington. Located close to reputable schools, lush parks, and shopping centres, this home combines comfort, convenience, and community. This home features three spacious bedrooms, each with built-in robes, with the master bedroom also featuring an ensuite. Another central bathroom offers both convenience and functionality. The heart of the home is the open-plan living area, which seamlessly connects to a well-appointed kitchen equipped with high-quality appliances, making it perfect for both everyday living and entertaining guests. Stepping outside, a beautifully landscaped garden, providing a serene retreat for relaxation or outdoor activities, complemented by a covered patio area ideal for alfresco dining. Additionally, the home includes a double garage, ensuring secure ...

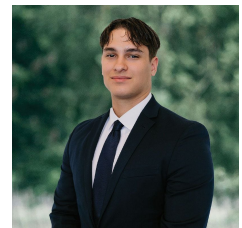
**Price** : \$ 580,000

**Land Size** : 641 sqm

**View** : <https://www.ballaratrealestate.com.au/sale/vic/ballarat-western-district/newington/residential/house/8035853>



**Dominic Morrison**  
5331 2233  
0409 557 461



**Mason Bourke**  
5331 2233  
0412 374 633

# 4 Gwenith Avenue **Newington**



Dominic Morrison 0409 557 461

This plan is for illustrative purposes only, floor plan proportions and scale are approximate. Plan prepared by PLP Ballarat © 2024 for Ballarat Real Estate.