

506 Neill Street Soldiers Hill VIC

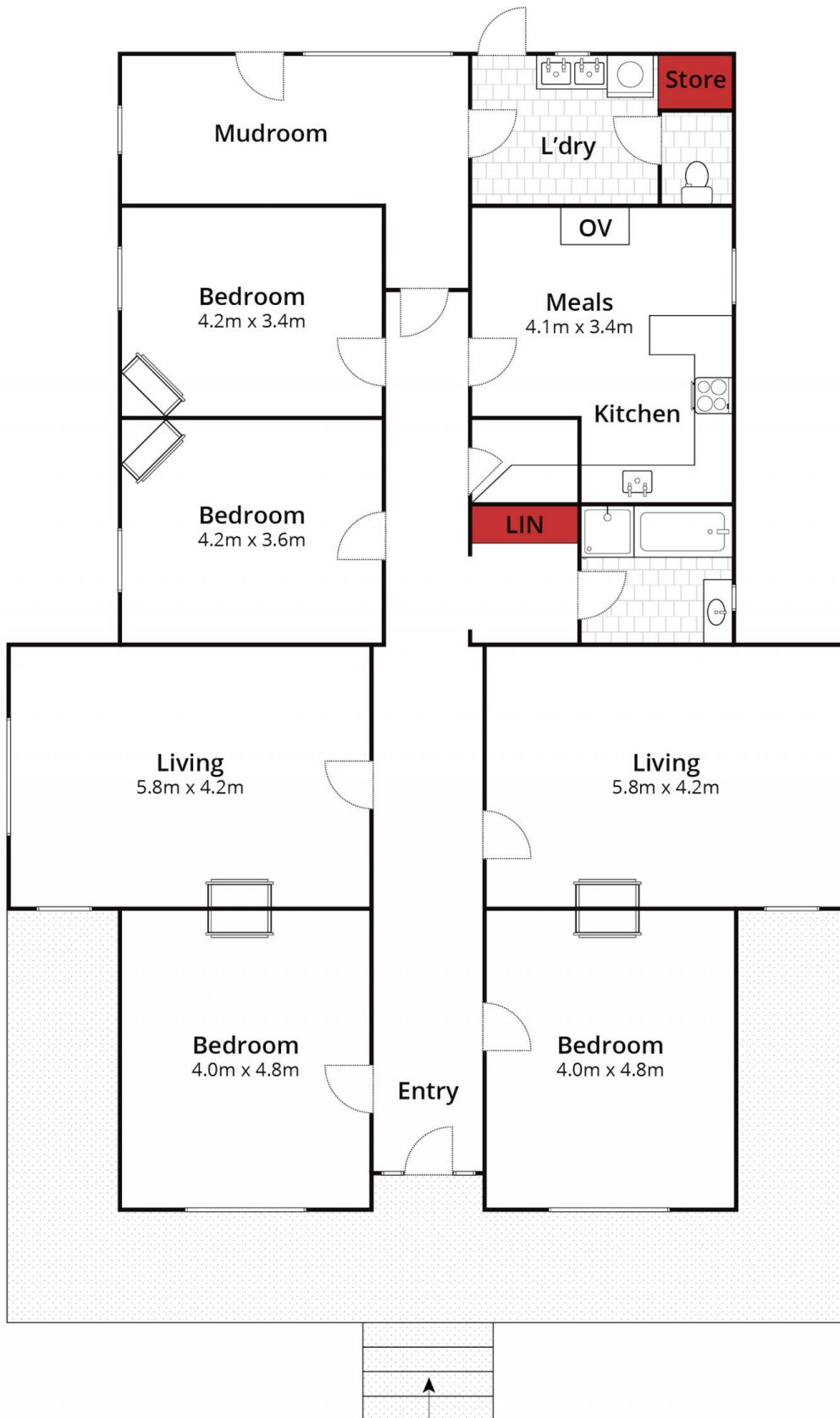
4 1 4

Nestled in the prestigious Neill Street of Soldiers Hill, this grand home, built circa 1890, exudes historical charm and modern comfort. Set on an elevated 919m² allotment, the residence is surrounded by quality homes and delightful cafes, with the convenience of being within walking distance to Ballarat Central, Lake Wendouree, and the Ballarat Train Station. The home features soaring ceilings, a grand entrance, central heating, and multiple fireplaces, ensuring a cozy and inviting atmosphere year-round. Offering four spacious bedrooms, two generously sized living rooms, and a practical mudroom at the rear, the property is perfect for families. The open kitchen and meals area provide a welcoming space for daily gatherings. All bedrooms are conveniently serviced by the main bathroom. With four car spaces available, this rare gem in a sought-after location w ...

Price : \$ 1,000,000
Land Size : 919 sqm
View : <https://www.ballaratrealestate.com.au/sale/vic/ballarat-western-district/soldiers-hill/residential/house/8036930>



Damian Larkin
03 53312233
0417 088 755



Approx House Area 200m²

Approx Land Area 919m²



Whilst bwrn.com.au has made every attempt to ensure the accuracy of the floor plan contained here, measurements are approximate and no responsibility is taken for any error, omission, or mis-statement. This plan is for illustrative purposes only.

506 Neill Street, Soldiers Hill

Ballarat
Real Estate

