



38 Dorset Drive Alfredton VIC

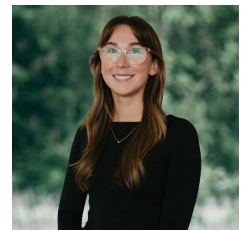
4 2 2

Introducing this truly exceptional family home in a prime location, occupying approximately 758m², just a short drive from Ballarat CBD. Its strategic placement ensures convenient access to schools, shops, sporting fields and essential amenities, facilitating a comfortable lifestyle for residents. With four well-sized bedrooms, three living spaces, and a spacious open kitchen, this generously proportioned property is the epitome of an ideal family home. The master bedroom boasts a generous walk-in robe and ensuite. Adjacent to the entrance, a study or additional bedroom adds versatility to the home. The open-plan kitchen features an island bench, plenty of cupboard space and quality appliances. The meals area seamlessly connects to the undercover outdoor patio area, perfect for entertaining guests all seasons. A separate kid's retreat, centrally located to t ...

Price : \$ 700,000
Land Size : 758 sqm
View : <https://www.ballaratrealestate.com.au/sale/vic/ballarat-western-district/alfredton/residential/house/8042170>

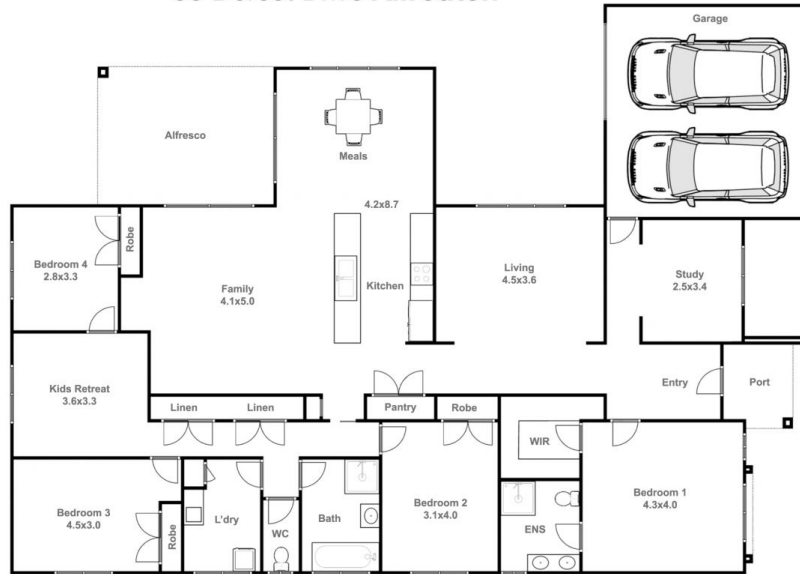


David Morrison
5331 2233
0438 342 227



Chelsea Skewes
5331 2233
0448913072

38 Dorset Drive **Alfredton**



David Morrison 0438 342 227

This plan is for illustrative purposes only, floor plan proportions and scale are approximate. Plan prepared by PLP Ballarat © 2024 for Ballarat Real Estate.