



22 Glazebrook Street Ballarat East VIC

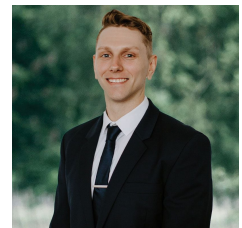
2 1 1

Nestled in the historic Ballarat East, this charming miners cottage sits on a generous 716 m2 (approx) plot, offering potential for further development (STCA). With its prime location, you can easily stroll to St. Alipius Parish, the Eureka Stockade, and all the vibrant offerings of the Ballarat CBD. Plus, convenient access to the Western Freeway makes commuting a breeze. The home greets you with a classic weatherboard facade and an inviting front veranda. Lush lawns and stepping stone paths lead you to the front door, setting a picturesque scene. Inside, you'll find two cozy bedrooms sharing a well-appointed bathroom/laundry area, complete with a shower, sink, toilet, and space for a washing machine. The open-plan layout ensures seamless connectivity throughout the home. The living area is a perfect retreat, featuring a wood fire and air conditioning for ye ...

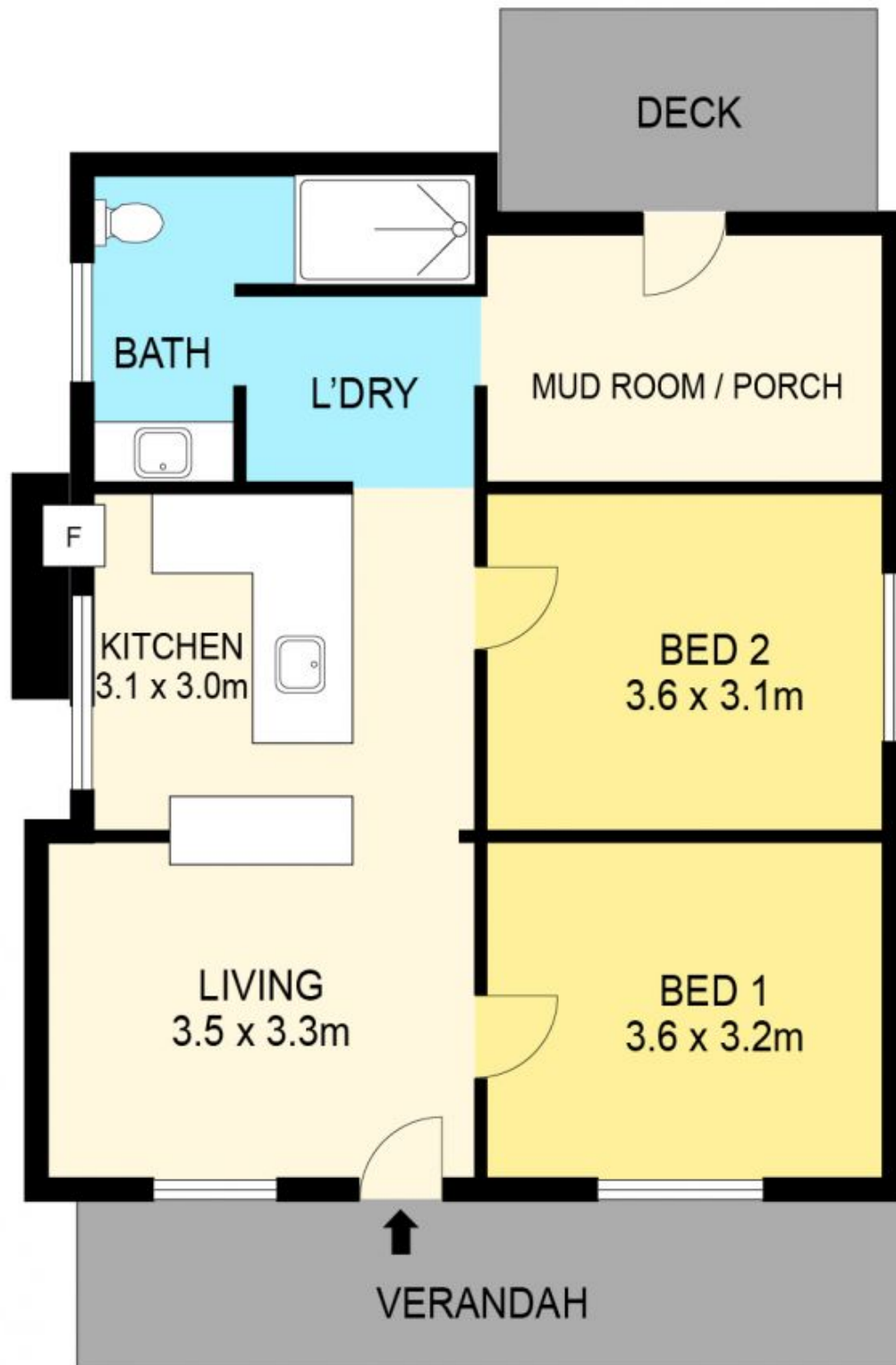
Price : \$ 395,000
Land Size : 716 sqm
View : <https://www.ballaratrealestate.com.au/sale/vic/ballarat-western-district/ballarat-east/residential/house/8042288>



Lachlan Sylvia
03 53312233
0458 068 234



Chris Just
5331 2233
0438 235 293



DISCLAIMER

PLANS SHOWN ARE FOR MARKETING PURPOSES ONLY. ALL DIMENSIONS ARE APPROXIMATE AND NOT TO SCALE. THEY ARE SUBJECT TO ERRORS AND INACCURACIES AND NO LIABILITY WILL BE ACCEPTED. INTERESTED PARTIES SHOULD MAKE THEIR OWN INQUIRES.

Ballarat
Real Estate

