



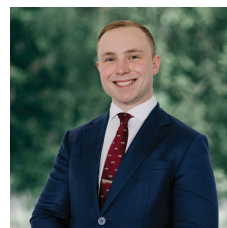
**1159 Eyre Street Newington VIC**

**3** **1** **2**

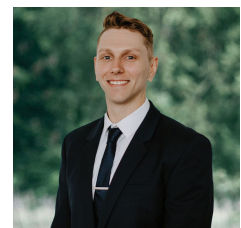
Welcome to "Rustaley." This stunning circa 1915 period home will be the one you fall in love with. Positioned right across the road from St. Patricks College Oval, you are literally walking distance to St. Patricks, Loretto & Clarendon Colleges, as well as Victoria Park and our iconic Lake Wendouree. The vibrant CBD is just moments away, making this the ideal spot for a thriving family. From the first glance, you'll be enchanted by the north-facing weatherboard facade, complete with a wrap-around veranda, well-manicured front gardens featuring roses and hedging, lush lawns, and brick paving leading to the front door. All set behind a classic white picket fence, this home exudes timeless street appeal. As soon as you step through the front door, you are greeted with beautiful lead-light windows, polished timber flooring, soaring ceilings, chandeliers, large t ...

**Price** : \$745,000 - \$785,000

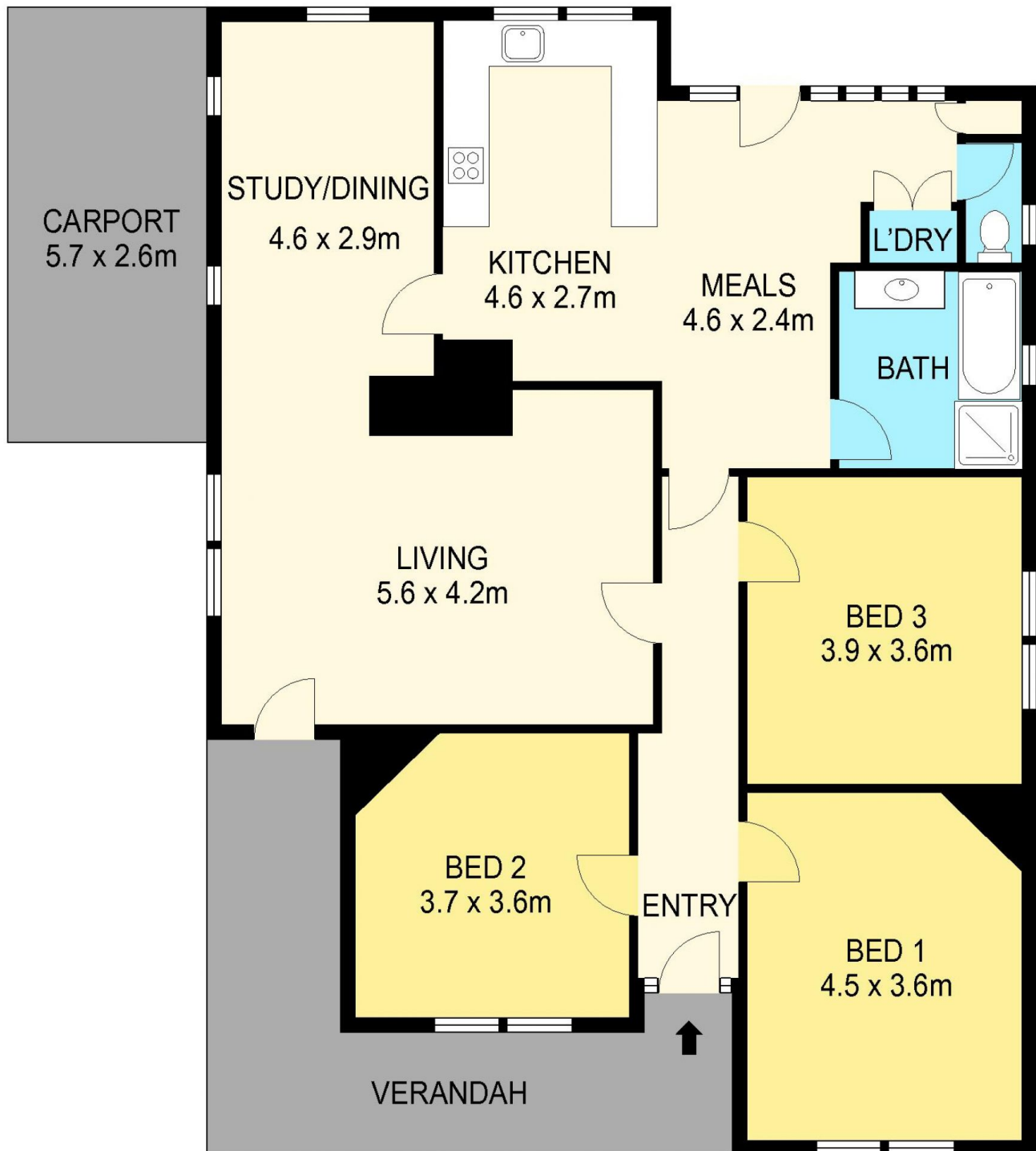
**View** : <https://www.ballaratrealestate.com.au/sale/vic/ballarat-western-district/newington/residential/house/8042289>



**Lachlan Sylvia**  
**03 53312233**  
**0458 068 234**



**Chris Just**  
**5331 2233**  
**0438 235 293**



#### DISCLAIMER

PLANS SHOWN ARE FOR MARKETING PURPOSES ONLY. ALL DIMENSIONS ARE APPROXIMATE AND NOT TO SCALE. THEY ARE SUBJECT TO ERRORS AND INACCURACIES AND NO LIABILITY WILL BE ACCEPTED. INTERESTED PARTIES SHOULD MAKE THEIR OWN INQUIRES.

**Ballarat**  
Real Estate

