



## 20 Cassowary Way Winter Valley VIC

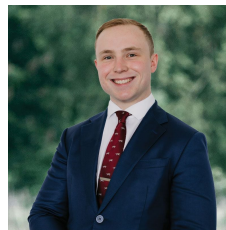
4 2 2

Nestled within the newly developed and rapidly expanding Carrington Estate lies this modern family residence on a comfortable 411m2 (approx) plot of land. Positioned within walking distance to park lands and the upcoming Alluvium Retail Hub, offering a variety of restaurants, retail outlets, supermarkets, and essential services. Additionally, Coltman Plaza and Delacombe Town Centre are just moments away, while the home is also zoned for the prestigious Ballarat High School and Alfredton Primary School, making it an ideal setting for a growing family to flourish. Upon first impression, the home welcomes with a modern brick veneer facade adorned with rendered accents, meticulously landscaped lawns, and a double lock-up garage. Comprising a total of four bedrooms, the master suite indulges with a walk-in robe and ensuite featuring a floating vanity, shower, and ...

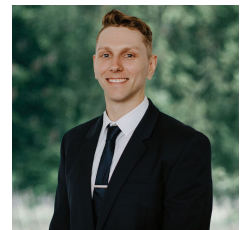
**Price** : \$550,000 - \$590,000

**Land Size** : 411 sqm

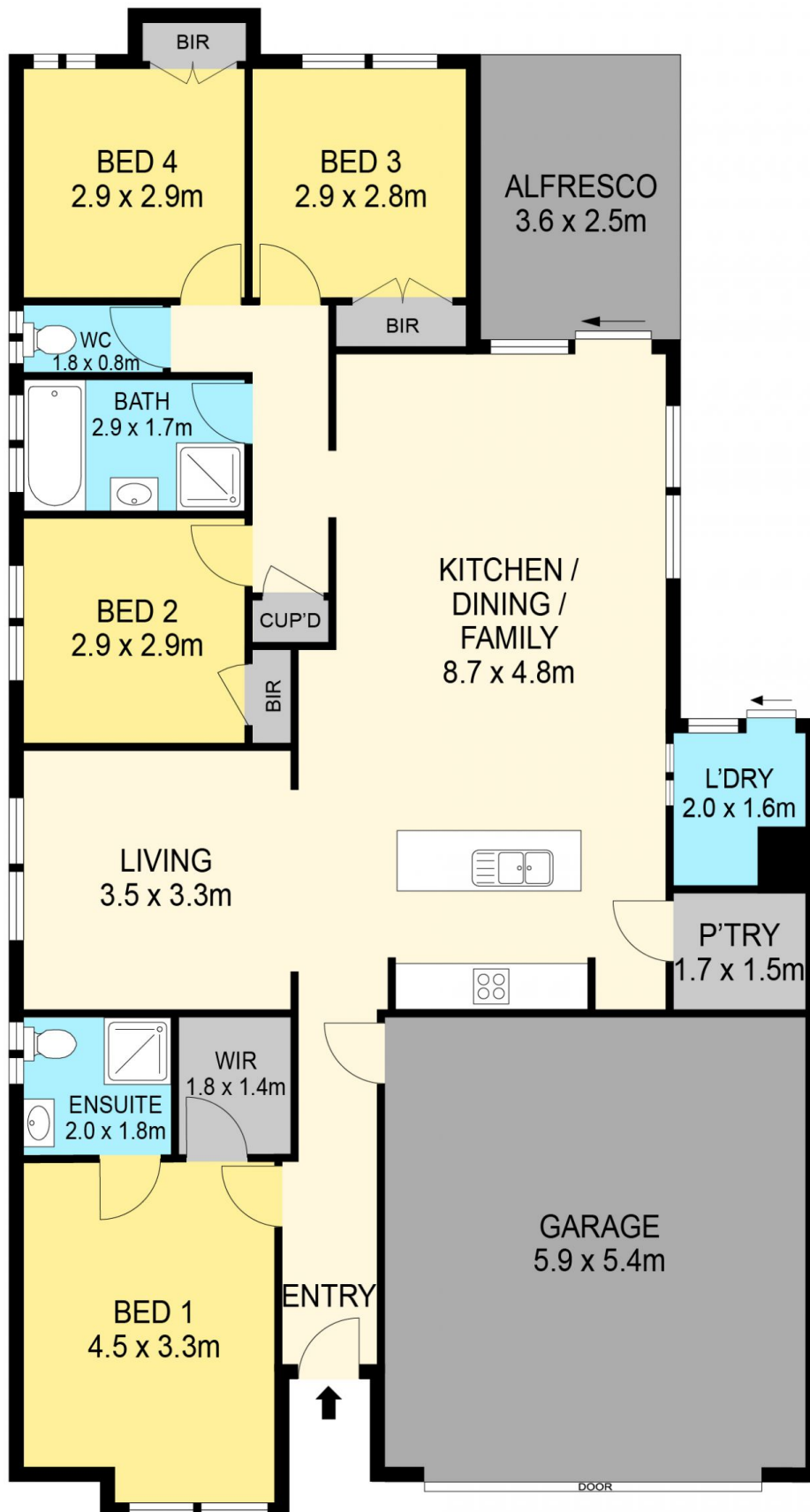
**View** : <https://www.ballaratrealestate.com.au/sale/vic/ballarat-western-district/winter-valley/residential/house/8048642>



**Lachlan Sylvia**  
03 53312233  
0458 068 234



**Chris Just**  
5331 2233  
0438 235 293



**DISCLAIMER**

PLANS SHOWN ARE FOR MARKETING PURPOSES ONLY. ALL DIMENSIONS ARE APPROXIMATE AND NOT TO SCALE. THEY ARE SUBJECT TO ERRORS AND INACCURACIES AND NO LIABILITY WILL BE ACCEPTED. INTERESTED PARTIES SHOULD MAKE THEIR OWN INQUIRES.

**Ballarat**  
Real Estate

