



18 Sayle Street Sebastopol VIC

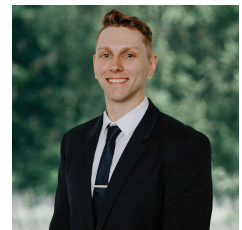
3 2 2

Nestled in the heart of Sebastopol, this charming home sits on a generous 820m² (approx) plot. Its prime location offers walking access to supermarkets, schools, medical facilities, eateries, essential amenities, and scenic walking trails, making it an ideal spot for a thriving family. The home features a charming brick veneer facade and a wraparound front veranda, complemented by well-established gardens and a driveway with ample off-street parking. Inside, the house is bathed in natural light and boasts three spacious bedrooms, each with built-in robes with the master suite boasting private ensuite. The well-appointed family bathroom includes a shower, vanity, built-in bath, and a nearby separate toilet. The front lounge room exudes warmth and character with its fireplace, brick feature wall, and wall lighting. A seamless brick archway connects the lounge ...

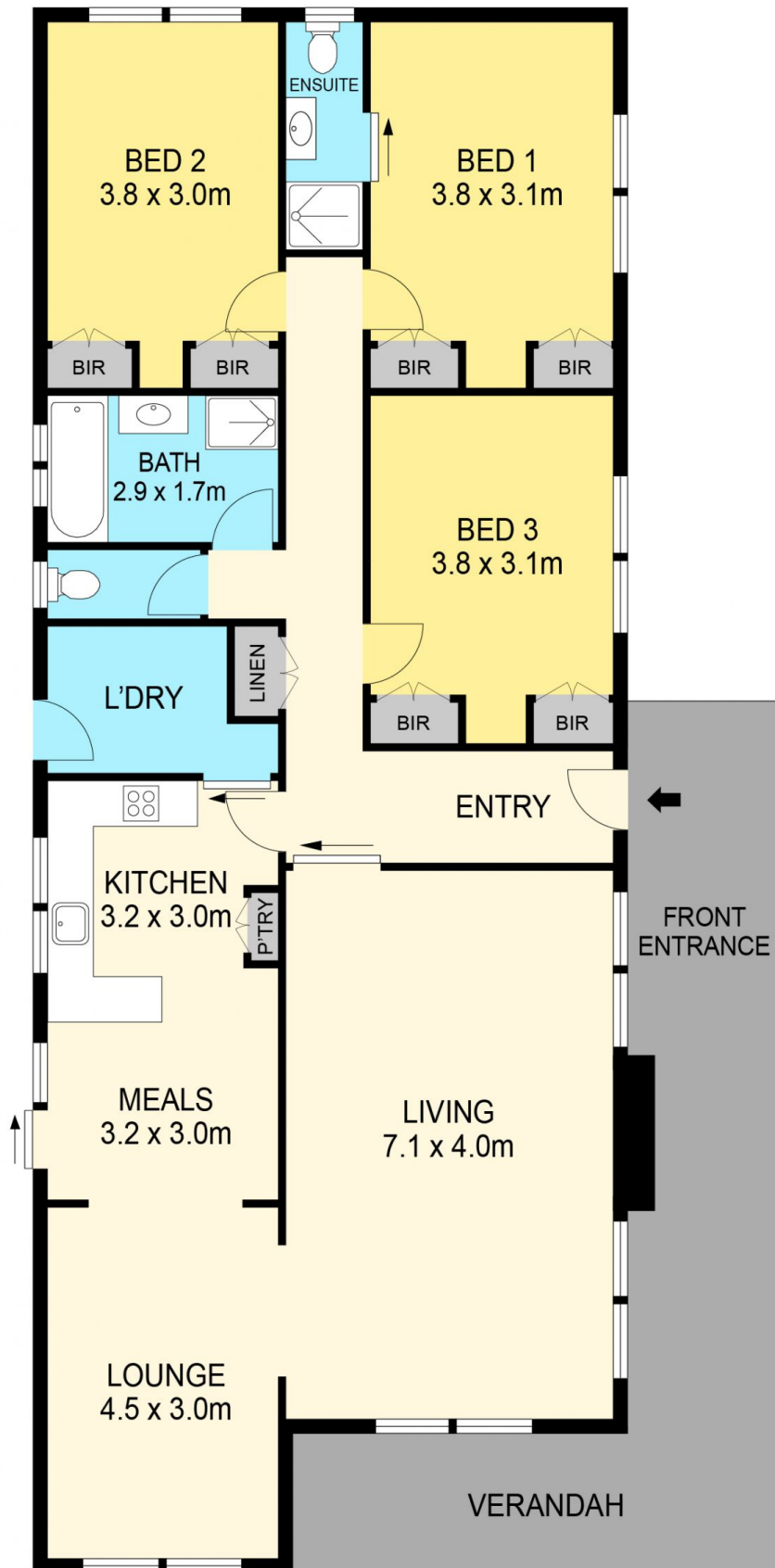
Price : \$ 440,000
Land Size : 820 sqm
View : <https://www.ballaratrealestate.com.au/sale/vic/ballarat-western-district/sebastopol/residential/house/8048651>



Lachlan Sylvia
03 53312233
0458 068 234



Chris Just
5331 2233
0438 235 293



DISCLAIMER

PLANS SHOWN ARE FOR MARKETING PURPOSES ONLY, ALL DIMENSIONS ARE APPROXIMATE AND NOT TO SCALE. THEY ARE SUBJECT TO ERRORS AND INACCURACIES AND NO LIABILITY WILL BE ACCEPTED. INTERESTED PARTIES SHOULD MAKE THEIR OWN INQUIRES.

Ballarat
Real Estate

