

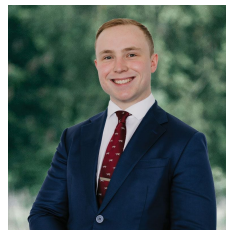


50 Maple Avenue Wendouree VIC

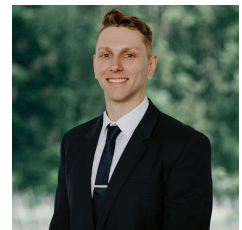
3 1 2

Discover the charm of this neat weatherboard home nestled in Wendouree, set on a generous 780m² (approx) plot. Located just a stone's throw from Stockland Wendouree, you'll enjoy easy access to retail stores, supermarkets, eateries, and medical centers. A short drive takes you to Lucas Town Centre and the vibrant Ballarat CBD, with seamless connectivity to the Western Freeway. This prime location offers both convenience and comfort. As you approach, the home's inviting weatherboard facade, lush lawns, and meticulously manicured gardens behind a classic picket fence creates an immediate sense of warmth and welcome. This home has seen recent upgrades including fresh paint and new blinds and curtains making it ready to move in. Inside, you'll find three cozy bedrooms sharing a well-appointed bathroom. The lounge room is perfect for family gatherings, while the ...

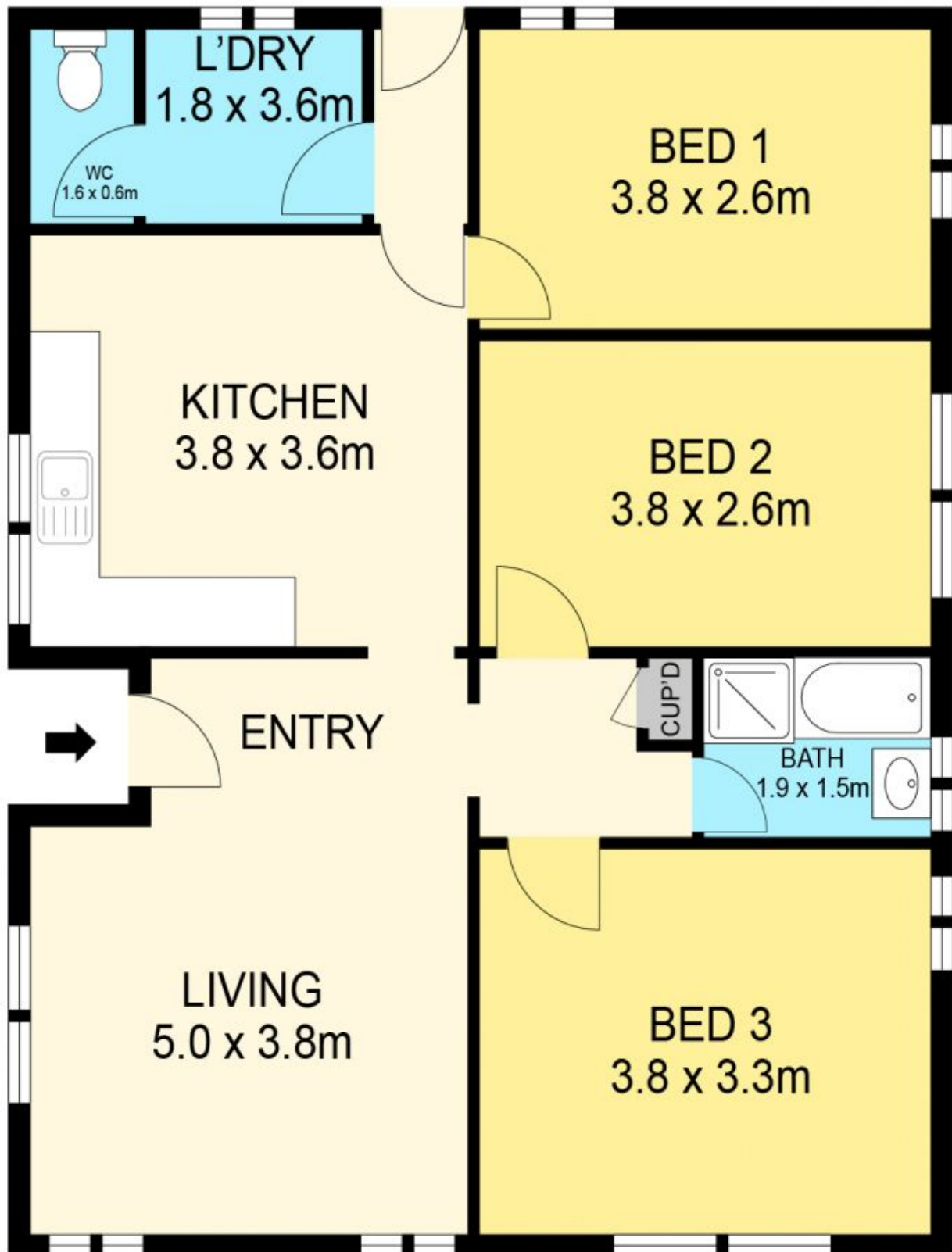
Price : \$ 335,000
Land Size : 780 sqm
View : <https://www.ballaratrealestate.com.au/sale/vic/ballarat-western-district/wendouree/residential/house/8048652>



Lachlan Sylvia
03 53312233
0458 068 234



Chris Just
5331 2233
0438 235 293



DISCLAIMER

PLANS SHOWN ARE FOR MARKETING PURPOSES ONLY. ALL DIMENSIONS ARE APPROXIMATE AND NOT TO SCALE. THEY ARE SUBJECT TO ERRORS AND INACCURACIES AND NO LIABILITY WILL BE ACCEPTED. INTERESTED PARTIES SHOULD MAKE THEIR OWN INQUIRES.

Ballarat
Real Estate

